



PRODUCT Catalog

4K DP1.2/HDMI2.0 Optical Extenders
AV OVER IP
Multi-format Converters
4K Quad Scaler Viewer
Splitters/Signal Converter







As a leading manufacturer in digital video industry, OPHIT has been developing and manufacturing our product with cost effectiveness and high quality for a long time. We specialize in the production of digital video extension systems with fiber optic interface for high speed and long distance transmission. Our wide variety of product line for Extending, Switching, Splitting, Converting allows customer to be completely satisfied with their purchase. OPHIT always makes every effort for our customer satisfaction and we will do our best to develop the world's leading technology.




Fiber Optic Extenders DVI

-  **DSP** DVI Real EDID 1Ch Fiber Optic Extender
-  **DSH** DVI Real EDID 1Ch Fiber Optic Extender-Pigtail
-  **CW-DVI** DVI Real EDID 1Ch Fiber Optic Extender-Wall plate
-  **DSL** DVI Self EDID 1Ch Fiber Optic Extender
-  **DSK** DVI Self EDID 1Ch Fiber Optic Extender
-  **DDL** DVI Self EDID 4Ch Fiber Optic Extender
-  **DIL** DVI Self EDID 4Ch Fiber Optic Extender-Embedded
-  **DDI** DVI Fiber Optic Cable
-  **DQSP** DVI Dual link Real EDID 2Ch Fiber Optic Extender
-  **DQSL** DVI Dual link Real/Self EDID 2Ch Fiber Optic Extender
-  **DQL** DVI Dual link Real/Self EDID 7Ch Fiber Optic Extender

Fiber Optic Extenders HDMI

-  **FTHS** HDMI 4K 1Ch Fiber Optic Extender
-  **HSP** HDMI Real EDID 1Ch Fiber Optic Extender-Pigtail
-  **HDMB2** HDMI 4K Fiber Optic Cable
-  **HDMB** HDMI Fiber Optic Cable

Fiber Optic Extenders DisplayPort

-  **FTDS** DisplayPort 4K 1Ch Fiber Optic Extender
-  **DSFP** DisplayPort Real EDID 1Ch Fiber Optic Extender-Pigtail
-  **DPM2** DisplayPort 4K Fiber Optic Cable

Fiber Optic Extenders SDI

-  **FTSM** Mini 12G SDI Fiber Optic Extender

Multi Viewer

-  **MSV** HD Quad Scaler Viewer
-  **MSV2** 4K Quad Scaler Viewer

Splitters

-  **DMD-H Series** DVI 1x2/1x5 Splitter
-  **FTD Series** HDMI 4K 1x2/1x4 Splitter
-  **DPHS** 4K Displayport 1.2/HDMI 2.0 Splitter

Converters

-  **DAU** Multi-Format Converter
-  **UVC-S300** Multi-Format Converter
-  **DPH** 4K Displayport 1.2 to HDMI 2.0 Converter
-  **DAD-U200** RGB analog to DVI digital Converter
-  **HDA** HDMI to RGB analog and Audio Converter
-  **DDAP** DVI digital to RGB analog Converter
-  **DDAX** DVI digital to RGB analog Converter
-  **DDA** DVI digital to RGB analog Converter Pigtail
-  **HSC** HDMI to SDI Converter
-  **SHC** SDI to HDMI Converter
-  **CVBX Series** Multi-Format Signal to DVI Fiber Converter

AV OVER IP

IP Network

-  **VyNet** HD AV Over IP
-  **VyNet2** 4K AV Over IP



Fiber Optic Extenders

Extenders over Fiber Optic



Fiber Optic Technology for Safety, Security and High Performance Reliability

Fiber optic solutions are ideal for applications that require galvanic isolation and emission-free transmission of A/V signals. Because transmission of content over fiber optic cabling is inherently secure and immune to electromagnetic interference (EMI), fiber applications are particularly favored in government, military, and medical environments. Ophit's optic fiber extenders are made to send various video interfaces such as DVI, HDMI, DisplayPort and SDI fiber optic cable up to hundreds or even thousands of meters.



	DVI Extenders		
	DVI Single link 1ch		

Model	DSP	DSH	CW-DVI
-------	-----	-----	--------



Key features	<ul style="list-style-type: none"> Real EDID transmission Up to WUXGA/1080p at 300m 1 SC terminated Multi-mode fiber 	<ul style="list-style-type: none"> Real EDID transmission Up to WUXGA/1080p at 300m Pigtail type module 1 SC terminated Multi-mode fiber 	<ul style="list-style-type: none"> Real EDID transmission Up to WUXGA/1080p at 300m Wall plate type 1 SC terminated Multi-mode fiber
--------------	---	--	--

Video

Video interface	DVI (Single-link)	DVI (Single-link)	DVI (Single-link)
Standards	DVI 1.0	DVI 1.0	DVI 1.0
Video bandwidth (Pixel clock)	2.25 Gbps (Single link)	2.25 Gbps (Single link)	2.25 Gbps (Single link)
Connector (Transmitter)	DVI-D male	DVI-D male	DVI-D male
Connector (Receiver)	DVI-D male	DVI-D male	DVI-D male
Resolution (Max.)	WUXGA(1920x1200)@60Hz, 1080p@60Hz	WUXGA(1920x1200)@60Hz, 1080p@60Hz	WUXGA(1920x1200)@60Hz, 1080p@60Hz
EDID transmission	Real EDID transmission	Real EDID transmission	Real EDID transmission
HDCP	HDCP compliant	HDCP compliant	HDCP compliant

Optic Fiber

Type of fiber	Multimode 50/125µm	Multimode 50/125µm	Multimode 50/125µm
Number of fiber	1	1	1
Type of connector	SC connector	SC connector	SC connector
Operating distance	300m (1,000ft)	300m (1,000ft)	300m (1,000ft)
Optical source	850nm VCSEL	850nm VCSEL	850nm VCSEL
O/E converter	PIN Photo Diode	PIN Photo Diode	PIN Photo Diode

General

Power supply	1 x External power supply for RX 100-240V DC 5V,2A	1 x External power supply for RX 100-240V DC 5V,2A	1 x External power supply for TX 100-240V DC 12V,1A
Power consumption (Max.)	TX 1.3W / RX 1.1W	TX 1.3W / RX 1.1W	TX 3.1W / RX 3.1W
Enclosure type	Aluminum	Aluminum	Metal
Enclosure dimensions	60W x 40D x 14H(mm)	300W x 33D x 12H(mm)	70W x 31D x 115H(mm)
Package dimensions	160W x 140D x 67H(mm)	350W x 177D x 62H(mm)	190W x 130D x 55H(mm)
Warranty	1 year	1 year	1 year
Certifications	CE, FCC	CE, FCC	CE, FCC
Environment	Operating temperature range: 0°C-50°C Storage temperature range: -20°C-70°C	Operating temperature range: 0°C-50°C Storage temperature range: -20°C-70°C	Operating temperature range: 0°C-50°C Storage temperature range: -20°C-70°C

Ordering information

Model name	DSP-TX DSP Transmitter DSP-RX DSP Receiver DSP-M DSP TX/RX and PS-M set	DSH-TX DSH Transmitter DSH-RX DSH Receiver DSH-M DSH TX/RX and PS-M set	CW-DVI-TX CW-DVI Transmitter CW-DVI-RX CW-DVI Receiver
------------	---	---	---

Model	DVI Extenders			
	DVI Single link 1ch		DVI Single link 4ch	
	DSL	DSK	DDL	DIL
				
				
Key features	<ul style="list-style-type: none"> Self EDID transmission Up to WUXGA/1080p at 1000m 1 SC terminated Multi-mode fiber 	<ul style="list-style-type: none"> Self EDID transmission Up to WUXGA/1080p at 1000m Medical certification 1 SC terminated Multi-mode fiber 	<ul style="list-style-type: none"> Self EDID transmission Up to WUXGA/1080p at 1000m Medical certification 4 LC terminated Multi-mode fiber 	<ul style="list-style-type: none"> Self EDID transmission Up to WUXGA/1080p at 1000m Embedded extension module 4 LC terminated Multi-mode fiber
Video interface	DVI (Single-link)	DVI (Single-link)	DVI (Single-link)	DVI (Single-link)
Standards	DVI 1.0	DVI 1.0	DVI 1.0	DVI 1.0
Video bandwidth (Pixel clock)	1.65Gbps (Single link)	1.65Gbps (Single link)	1.65Gbps (Single link)	1.65Gbps (Single link)
Connector (Transmitter)	DVI-D male	DVI-D male	DVI-D male	Header 20pin
Connector (Receiver)	DVI-D male	DVI-D male	DVI-D male	Header 20pin
Resolution (Max.)	WUXGA(1920x1200)@60Hz, 1080p@60Hz	WUXGA(1920x1200)@60Hz, 1080p@60Hz	WUXGA(1920x1200)@60Hz, 1080p@60Hz	WUXGA(1920x1200)@60Hz, 1080p@60Hz
EDID transmission	Self EDID transmission	Self EDID transmission	Self EDID transmission	Self EDID transmission
HDCP	N/A	N/A	N/A	N/A
Type of fiber	Multimode 50/125µm	Multimode 50/125µm	Multimode 50/125µm	Multimode 50/125µm
Number of fiber	1	1	4	4
Type of connector	SC connector	SC connector	LC connector	LC connector
Operating distance	1000m (3,300ft)	1000m (3,300ft)	1000m (3,300ft)	1000m (3,300ft)
Optical source	850nm VCSEL	850nm VCSEL	850nm VCSEL	850nm VCSEL
O/E converter	PIN Photo Diode	PIN Photo Diode	PIN Photo Diode	PIN Photo Diode
Power supply	1 x External power supply for RX 100-240V DC 5V,2A	1 x External power supply for RX 100-240V DC 5V,2A	1 x External power supply for RX 100-240V DC 5V,2A	No External power supply
Power consumption (Max.)	TX 0.8W / RX 0.6W	TX 0.8W / RX 0.6W	TX 0.65W / RX 1.15W	TX 0.9W / RX 1.2W
Enclosure type	Plastic	Aluminum	Plastic	Plastic
Enclosure dimensions	67W x 40D x 15H(mm)	60W x 40D x 14H(mm)	70W x 40D x 15H(mm)	50W x 31D x 11H(mm)
Package dimensions	160W x 140D x 67H(mm)	160W x 140D x 67H(mm)	160W x 140D x 67H(mm)	160W x 140D x 67H(mm)
Warranty	1 year	1 year	1 year	1 year
Certifications	CE, FCC	CE, FCC, UL	CE, FCC, UL	
Environment	Operating temperature range: 0°C-50°C Storage temperature range: -20°C-70°C	Operating temperature range: 0°C-50°C Storage temperature range: -20°C-70°C	Operating temperature range: 0°C-50°C Storage temperature range: -20°C-70°C	Operating temperature range: 0°C-50°C Storage temperature range: -20°C-70°C
Model name	DSL-TX DSL Transmitter DSL-RX DSL Receiver DSL-M DSL TX/RX and PS-M set	DSK-TX DSK Transmitter DSK-RX DSK Receiver DSK-M DSK TX/RX and PS-M set	DDL-TX DDL Transmitter DDL-RX DDL Receiver DDL-M DDL TX/RX and PS-M set	DIL-TX DIL Transmitter DIL-RX DIL Receiver DIL-M DIL TX/RX set

DVI Extenders

DVI Single link cable	DVI Dual link 2ch	DVI Dual link Multi ch	
DDI	DQSP	DQSL	DQL



- Up to WUXGA/1080p at 100m
- No external power supply

- DVI Dual link extender
- Up to WQXGA(2560x1600) at 300m
- Real EDID transmission
- 2 SC terminated Multi-mode fiber

- Dual link extender(2 fiber)
- Up to WQXGA(2560x1600) at 100m
- Real/Self EDID transmission
- 2 LC terminated Multi-mode fiber

- Dual link extender(7 fiber)
- Up to WQXGA(2560x1600) at 100m
- Real/Self EDID transmission
- 7 LC terminated Multi-mode fiber

DVI (Single-link)	DVI (Dual-link)	DVI (Dual-link)	DVI (Dual-link)
DVI 1.0	DVI 1.0	DVI 1.0	DVI 1.0
1.65Gbps (Single link)	2.25Gbps (Single link) / Dual link	2.25Gbps (Single link) / Dual link	2.25Gbps (Single link) / Dual link
DVI-D male	DVI-D male	DVI-I female / RJ-45 female for Real EDID	DVI-I female / RJ-45 female for Real EDID
DVI-D male	DVI-D male	DVI-I female / RJ-45 female for Real EDID	DVI-I female / RJ-45 female for Real EDID
WUXGA(1920x1200)@60Hz, 1080p@60Hz	WQXGA(2560x1600)@60Hz	WQXGA(2560x1600)@60Hz	WQXGA(2560x1600)@60Hz
Real EDID transmission	Real EDID transmission	Real EDID / Self EDID transmission	Real EDID / Self EDID transmission
HDCP compliant	HDCP compliant	NA	NA
Fiber+Copper Hybrid	Multimode 50/125µm	Multimode 50/125µm	Multimode 50/125µm
1	2	2	7
NA	SC connector	LC connector	LC connector
100m (330ft)	300m (1,000ft)	100m (330ft)	100m (330ft)
850nm VCSEL	850nm VCSEL	850nm VCSEL	850nm VCSEL
PIN Photo Diode	PIN Photo Diode	PIN Photo Diode	PIN Photo Diode
No External power supply	2 x External power supply for TX/RX 100-240V DC 5V,2A	2 x External power supply for TX/RX 100-240V DC 5V,2A	2 x External power supply for TX/RX 100-240V DC 5V,2A
TX 0.85W / RX 0.85W	TX 1.6W / RX 1.65W	TX 1.4W(Single link) / 1.9W(Dual link) RX 1.65W	TX 1.0W(Single link) / 1.4W(Dual link) RX 2.5W
Metal	Aluminum	Metal	Metal
71W x 40D x 15H(mm)	75W x 50D x 15H(mm) 190W x 130D x 55H(mm)	135W x 85D x 25H(mm) 240W x 185D x 70H(mm)	180W x 90D x 30H(mm) 315W x 295D x 50H(mm)
1 year	1 year	1 year	1 year
CE, FCC	CE, FCC	CE, FCC	CE, FCC
Operating temperature range: 0°C-50°C	Operating temperature range: 0°C-50°C	Operating temperature range: 0°C-50°C	Operating temperature range: 0°C-50°C
Storage temperature range: -20°C-70°C	Storage temperature range: -20°C-70°C	Storage temperature range: -20°C-70°C	Storage temperature range: -20°C-70°C
DDI-AXXX DVI optic fiber cable XXXm XXX: length(meter) 10/15/20/25/30/40/50/60/70/80/90/100m	DQSP-TX DQSP Transmitter DQSP-RX DQSP Receiver DQSP-M DQSP TX/RX and PS-M set	DQSL-TX DQSL Transmitter DQSL-RX DQSL Receiver DQSL-M DQSL TX/RX and PS-M set	DQL-TX DQL Transmitter DQL-RX DQL Receiver DQL-M DQL TX/RX and PS-M set

	DisplayPort Extenders			SDI
	DisplayPort 1ch		DisplayPort cable	12G SDI
Model	FTDS	DSFP	DPM2	FTSM



Key features	FTDS	DSFP	DPM2	FTSM
	<ul style="list-style-type: none"> Real EDID transmission Up to 4K(3840x2160@60Hz) at 200m 1 SC terminated Multi-mode fiber 	<ul style="list-style-type: none"> Real EDID transmission Up to WQXGA(2560x1600) at 300m Pigtail type module 1 SC terminated Multi-mode fiber 	<ul style="list-style-type: none"> Up to 4K(3840x2160@60Hz) at 40m No external power supply 	<ul style="list-style-type: none"> Mini type 12G SDI Up to 4K 60p(3840x2160@60Hz) at 5Km 1 LC Terminated Single-mode fiber

Video

Video interface	DisplayPort	DisplayPort	DisplayPort	SDI
Standards	DisplayPort 1.2	DisplayPort 1.1a	DisplayPort 1.2	12G-SDI
Video bandwidth (Pixel clock)	21.6Gbps	10.8Gbps	21.6Gbps	11.88Gbps
Connector (Transmitter)	DisplayPort 20pin male	DisplayPort 20pin male	DisplayPort 20pin male	SDI (BNC)
Connector (Receiver)	DisplayPort 20pin male	DisplayPort 20pin male	DisplayPort 20pin male	SDI (BNC)
Resolution (Max.)	4K(3840x2160)@60Hz	WQXGA(2560x1600)@60Hz	4K(3840x2160)@60Hz	12G-SDI (3840*2160@60Hz)
EDID transmission	Real EDID transmission	Real EDID transmission	Real EDID transmission	
HDCP	DPCP compliant	DPCP compliant	DPCP compliant	

Optic Fiber

Type of fiber	Multimode 50/125µm	Multimode 50/125µm	Fiber+Copper Hybrid	Singlemode 9/125um
Number of fiber	1	1	1	1
Type of connector	SC connector	SC connector	NA	LC Connector
Operating distance	200m (650ft)	300m (1,000ft)	40m (130ft)	5km
Optical source	850nm VCSEL	850nm VCSEL	850nm VCSEL	1310nm
O/E converter	PIN Photo Diode	PIN Photo Diode	PIN Photo Diode	1310nm Photo Diode

General

Power supply	2 x External power supply for TX/RX 100~240V DC 5V,2A	2 x External power supply for TX/RX 100~240V DC 5V,2A	No external power supply	2 x External power supply for TX/RX 100~240V DC 5V,2A
Power consumption (Max.)	TX 1.75W / RX 2W	TX 1.3W / RX 1.3W	TX 0.92W / RX 1.05W	TX 1.5W / RX 1.5W
Enclosure type	Metal	Aluminum	Aluminum	Metal
Enclosure dimensions	81.2W x 21.1D x 47.5H(mm)	300W x 33D x 12H(mm)	114W x 25D x 21H(mm)	54W x 25D x 25H (mm)
Package dimensions	242W x 185D x 70H(mm)	350W x 177D x 62H(mm)		TBD...
Warranty	1 year	1 year	1 year	1 year
Certifications	CE, FCC	CE, FCC	CE, FCC	CE, FCC
Environment	Operating temperature range: 0°C~50°C Storage temperature range: -20°C~70°C	Operating temperature range: 0°C~50°C Storage temperature range: -20°C~70°C	Operating temperature range: 0°C~50°C Storage temperature range: -20°C~70°C	Operating temperature range: 0°C~50°C Storage temperature range: -20°C~70°C

Ordering information

Model name	FTDS-TX FTDS Transmitter FTDS-RX FTDS Receiver FTDS-M FTDS TX/RX and PS-M set	DSFP-TX DSFP Transmitter DSFP-RX DSFP Receiver DSFP-M DSFP TX/RX and PS-M set	DPM2-AXXX DisplayPort optic fiber cable XXXm XXX: length(meter) 10/15/20/25/30/40m	FTSM-TX FTSM Transmitter FTSM-RX FTSM Receiver FTSM-M FTSM TX/RX and PS-M set
------------	---	---	--	---

HDMI Extenders

HDMI 1ch		HDMI cable	
FTHS	HSP	HDMB2	HDMB



- Real EDID transmission
- Up to 4k(4096x2160@60Hz) at 200m
- 1 SC terminated Multi-mode fiber

- Real EDID transmission
- Up to WUXGA/1080p at 300m
- Pigtail type module
- 1 SC terminated Multi-mode fiber

- Up to 4K(3840x2160@60Hz) at 40m

- Up to WUXGA/1080p at 100m

Video

HDMI	HDMI	HDMI	HDMI
HDMI 2.0	HDMI 1.3a	HDMI 2.0	HDMI 1.3a
18Gbps	2.25Gbps	18Gbps	2.25Gbps
HDMI type A female	HDMI type A male	HDMI type A male	HDMI type A male
HDMI type A female	HDMI type A male	HDMI type A male	HDMI type A male
4K(4096x2160@60Hz)	WUXGA(1920x1200@60Hz, 1080p@60Hz)	4K(3840x2160@60Hz)	WUXGA(1920x1200@60Hz, 1080p@60Hz)
Real EDID transmission	Real EDID transmission	Real EDID transmission	Real EDID transmission
HDCP compliant	HDCP compliant	HDCP compliant	HDCP compliant

Optic Fiber

Multimode 50/125μm(OM3)	Multimode 50/125μm	Fiber+Copper Hybrid	Fiber+Copper Hybrid
1	1	1	1
SC connector	SC connector	NA	NA
200m (650ft)	300m (1,000ft)	40m (130ft)	100m (330ft)
850nm VCSEL	850nm VCSEL	850nm VCSEL	850nm VCSEL
PIN Photo Diode	PIN Photo Diode	PIN Photo Diode	PIN Photo Diode

General

2 x External power supply for TX/RX 100-240V DC 5V,2A	1 x External power supply for RX 100-240V DC 5V,2A	1 x External power supply for TX 100-240V DC 5V,2A	1 x External power supply for TX 100-240V DC 5V,2A
TX 3.05W / RX 2.85W	TX 1.3W / RX 1.1W	TX 1.65W / RX 2.2W	TX 0.8W / RX 1.05W
Metal	Aluminum	Aluminum	Metal
81.2W x 21.1D x 47.5H(mm)	300W x 33D x 12H(mm)	TX 74W x 24D x 19H(mm) RX 54W x 24D x 19H(mm)	TX 75W x 25D x 20H(mm) RX 55W x 25D x 20H(mm)
242W x 185D x 70H(mm)	350W x 177D x 62H(mm)		
1 year	1 year	1 year	1 year
CE, FCC	CE, FCC	CE, FCC	CE, FCC
Operating temperature range: 0°C-50°C	Operating temperature range: 0°C-50°C	Operating temperature range: 0°C-50°C	Operating temperature range: 0°C-50°C
Storage temperature range: -20°C-70°C	Storage temperature range: -20°C-70°C	Storage temperature range: -20°C-70°C	Storage temperature range: -20°C-70°C

Ordering Information

FTHS-TX FTHS Transmitter	HSP-TX HSP Transmitter	HDMB2-AXXX HDMI optic fiber cable XXXm	HDMB-AXXX HDMI optic fiber cable XXXm
FTHS-RX FTHS Receiver	HSP-RX HSP Receiver	XXX: length(meter)	XXX: length(meter)
FTHS-M FTHS TX/RX and PS-M set	HSP-M HSP TX/RX and PS-M set	10/15/20/25/30/40m	10/15/20/25/30/40/50/60/70/80/90/100m



Multi Viewer

4K Quad Scaler Viewer (with HDMI2.0 / DisplayPort 1.2)

The HDMI2.0 / DisplayPort1.2(DP1.2) Multi Scaler Viewer (Model : MSV2) is an advanced 4K video processor for multimedia presentations. It is a video signal processing device that can one output of 4 input video signals to one video display device and provides 4 screen output modes. 4-Inputs of MSV2 have 2 HDMI ports and 2 selectable ports(HDMI or DisplayPort), the user can select the input video the DisplayPort 1.2 or HDMI 2.0 basically, it supports various output resolutions including up / down scale and supports seamless channel change.



Multi-format Quad Scaler Viewer		
Model	MSV	MSV2



Key features	<ul style="list-style-type: none"> 4 modular card type inputs : DVI 1 modular card type output : DVI 1 selectable audio output among 4 audio inputs Each input is resized and positioned anywhere on the screen Output resolution scaled up to WUXGA(1920x1200),1080p Input resolution up to WUXGA(1920x1200) Seamless video switching Front panel button Up to 4 user programed presets Pan&Zoom, overlay Window titles, borders RS-232 serial, Ethernet, Front panel button control Front panel lockout Support 6 color user selectable background 1U 19" Rack-mountable metal enclosure 	<ul style="list-style-type: none"> Full range of input and output format (Up to 4K@60Hz 4:4:4) 4 Presets Mode and User Programmable preset HDMI 2.0, Displayport 1.2 Compliant Max Resolution : 4K2K 60p Supports HDMI 1.4 / 2.0 Compliant with HDMI 2.0, data rate up to 6Gbps HDCP 2.2 Compliant RS-232 and LAN Control Support Preview function by user interface program Seamless Input channel Switching 1U 19"Rack type
--------------	---	--

DVI Input

Number/type of Connector	1~4 x DVI-D via DVI-I female connector(digital only)	2xHDMI2.0 2xHDMI2.0 / DP1.2 (Selectable)
Video bandwidth (Pixel clock)	1.65Gbps(Single link)	-
Resolution range	480i/p~1080p,WUXGA	4096x2160@60Hz

DVI Output

Number/type of Connector	1 x DVI-D via DVI-I female connector(digital only)	1x HDMI2.0
Video bandwidth (Pixel clock)	1.65Gbps (Single link)	-
Resolution range	480p,720p,1080p,XGA,SXGA,UXGA,WUXGA	4096x2160@60Hz

Control

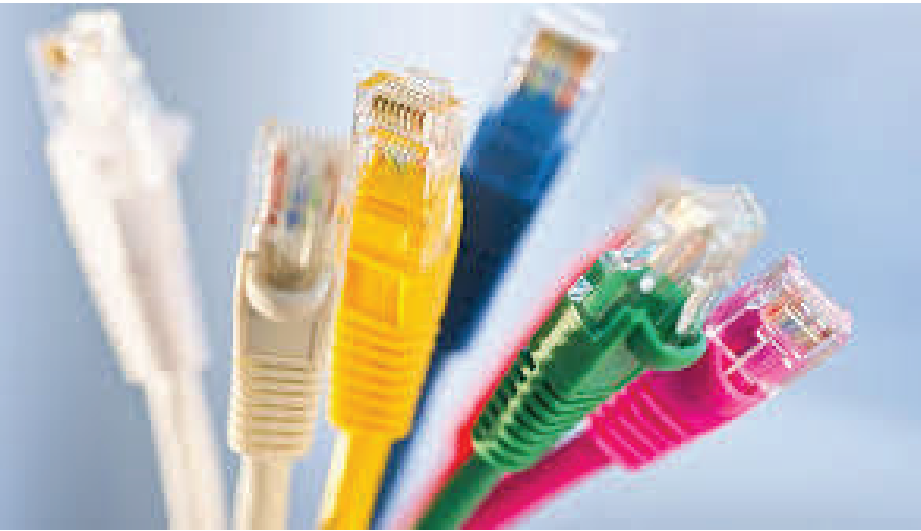
Control	Serial control via RS-232 9pin female (115200 baud rate) RJ-45 female (Proprietary GUI software based on Windows XP,7,8) Front panel button control (OSD) WiFi(Android application)	Serial control via RS-232 9pin female (115200 baud rate) Web base control via Ethernet TCP/IP 10/100 base TX, Front panel button control (OSD) -
---------	--	---

General

Power supply	100~240V DC 12V,3.33A	100~240V DC 12V,3.33A
Enclosure type	Metal	Metal
Enclosure dimensions	1U, 19" rack-mountable	1U, 19" rack-mountable
Package dimensions	436W x 298.5D x 44H(mm)	436W x 213D x 44H(mm)
Warranty	1 year	1 year
Certifications	CE, FCC	CE, FCC
Environment	Operating temperature range: 0°C~40°C Storage temperature range: -20°C~60°C	Operating temperature range: 0°C~40°C Storage temperature range: -20°C~60°C

Ordering information

Model name	MSV..... Quad scaler viewer frame MSV DVI IC..... Quad scaler viewer DVI Input card MSV DVI OC..... Quad scaler viewer DVI Output card	MSV2..... 4K Quad scaler viewer
------------	--	---------------------------------



AV OVER IP Series

AV Over IP

The Vynet series is a real AV over IP network solution which supports up to 4K@60Hz resolution. It allows to make a A/V distribution, integration and video wall control processing through standard network (1G Ethernet / 10G Ethernet switch) without any frame latency. The Vynet series offers high-performance, high quality and reliable system environment for customer by supporting up to true 4K@60Hz(4:4:4).

	Video OVER IP	
	Full HD	4K (UHD)
Model	VyNet	VyNet2



Input Format	HDMI	HDMI2.0
Input Signal	Max 1920x1080@60Hz	Max 4096x2160@60Hz
Output Format	HDMI	HDMI2.0
Output Signal	Max 1920x1080@60Hz	Max 4096x2160@60Hz
USB	Mini B Type x 2	USB A Type x 2(keyboard, mouse)
AUDIO		Phone Jack x 1
Ethernet	RJ-45 x 1	RJ-45 x 1
RS-232 Control		D-sub 9pin x 1
Dimensions	120W x 80D x 31.2H (mm)	195W x 110D x 35H (mm)
Enclosure Color	White	White
Power	100-240V DC 5V,2A Power over Ethernet (13W type 1 PD, IEEE802.3)	100-240V DC 12V,2.5A



Splitters

DVI/HDMI Splitters

	Splitters			
	DVI Splitter	HDMI Splitter		4K Splitter
Model	DMD-H102 (1x2)	FTD-102 (1x2)	FTD-104 (1x4)	DPHS



Video Input				
Signal type/Connectors	1xDVI-D via DVI-I female connector	1xHDMI via type A female connector	1xHDMI via type A female connector	1XHDMI via type A Female connector 1XDP 20P Female connector
Video bandwidth (Pixel clock)	1.65Gbps	3.4Gbps	3.4Gbps	5.4Gbps
Resolution range	Up to WUXGA/1080p	Up to 4K(3840x2160@30Hz)	Up to 4K(3840x2160@30Hz)	Up to 4K(3840x2160@60Hz)
Video Output				
Signal type/Connectors	2xDVI-D via DVI-I female connector	2xHDMI via type A female connector	4xHDMI via type A female connector	4xHDMI via type A female connector
Video bandwidth (Pixel clock)	1.65Gbps	3.4Gbps	3.4Gbps	5.4Gbps
Resolution range	Up to WUXGA/1080p	Up to 4K(3840x2160@30Hz)	Up to 4K(3840x2160@30Hz)	Up to 4K(3840x2160@60Hz)
General				
Power supply	1 x External power supply 100~240V DC 5V, 2A	1 x External power supply 100~240V DC 12V,1A	1 x External power supply 100~240V DC 12V,1A	1 x External power supply 100~240V DC 12V,1A
Power consumption (Max.)	3W	5.1W	6.3W	6.6 W
Enclosure type	Metal	Metal	Metal	Metal
Enclosure dimensions	175W x 100D x25H(mm)	180W x 95D x30H(mm)	180W x 95D x30H(mm)	82W x 210D x 30H(mm)
Package dimensions	291W x 152D x 40H(mm)	291W x 152D x 40H(mm)	291W x 152D x 40H(mm)	242W x 185D x 70H(mm)
Warranty	1 year	1 year	1 year	1 year
Certifications	CE, FCC, KC	CE, FCC, KC	CE, FCC ,KC	CE
Enviroment	Operating temperature range: 0°C~50°C Storage temperature range: -20°C~70°C ** 1:5 Distributor available			



Converter

Multi Format Converters

DAU



- Input: 1 DVI, 1 RGB, 1 S-Video, 1 Composite
- Output: 1 DVI
- RS-232 and OSD control
- Auto and manual selecting between inputs
- 6 different DVI output resolution setting
- Aspect ratio control
- Supports PIP for 2 inputs

UVC-S300



- Input: 1 HDMI
- Output: 1 DVI, 1 RGB, 1 S-Video, 2 Composite
- 6 different cropping position for S-Video, Composite video
- output signals
- Support XGA, SXGA, 1080p resolution

Mini Converters

AD/DA Converters



RGB to DVI Converter **DAD-U200**
 DVI to RGB Converter **DDAP**
 DVI to RGB Converter **DDAX**
 DVI to RGB Converter Pigtail type **DDA**
 HDMI to RGB and Audio Converter **HDA**

HDMI-SDI Converters



HDMI to SHC Converter **HSC**
 SHC to HDMI Converter **SHC**

CVBXB Series



* Box type converters
 DVI to DVI Optic Fiber Converter **CVBXB-DVI**
 RGB to DVI Optic Fiber Converter **CVBXB-VGA**
 S-Video to DVI Optic Fiber Converter **CVBXB-SVID**
 SDI to DVI Optic Fiber Converter **CVBXB-SDI**

CVBXW Series



* Wall plate type converters
 DVI to DVI Optic Fiber Converter **CVBXW-DVI**
 RGB to DVI Optic Fiber Converter **CVBXW-VGA**
 S-Video to DVI Optic Fiber Converter **CVBXW-SVID**
 SDI to DVI Optic Fiber Converter **CVBXW-SDI**

For more information of Ophit fiber optic extenders, please see next page.

Multi-format Converters

Multi-format signal In/out

Model	DAU	UVC-S300
-------	-----	----------



Key features	<ul style="list-style-type: none"> ▪ DVI,RGB,S-Video,Composite converting to DVI ▪ RS-232 and OSD control ▪ Auto and manual input signal selecting ▪ 6 different DVI output resolution setting ▪ Aspect ratio control ▪ Support PIP for 2 inputs 	<ul style="list-style-type: none"> ▪ HDMI converting to DVI,RGB,S-Video, Composite (RCA and BNC) ▪ 6 different cropping position
--------------	--	--

Video Input

Signal type/Connectors	1xDVI-D via DVI-I female connector 1xRGB via D-sub 15pin female connector 1xS-Video via 4pin DIN female connector 1xComposite Video via RCA female connector	1xHDMI via type A female connector
Video bandwidth (Pixel clock)	1.65Gbps	1.65Gbps
Resolution range	DVI-D: VGA-WUXGA RGB Analog: VGA-WUXGA S-Video&Composite Video: NTSC/PAL/SECAM	XGA(1024x768)@50/60Hz SXGA(1280x1024)@50/60Hz 1080p(1920 x 1080)@50/60Hz

Video Output

Signal type/Connectors	1xDVI-D via DVI-I female connector	1xDVI-D via DVI-I female connector 1xRGB via D-sub 15pin female connector 1xS-Video via 4pin DIN female connector 1xComposite video via RCA female connector 1xComposite video via 75Ω BNC female connector
Video bandwidth (Pixel clock)	1.65Gbps	1.65Gbps
Resolution range	6 user selectable resolution using OSD menu: WUXGA,UXGA,SXGA,XGA,1080p,720p	DVI-D&RGB Analog: XGA(1024x768)@50/60Hz SXGA(1280x1024)@50/60Hz 1080p(1920 x 1080)@50/60Hz Composite Video&S-Video: NTSC/PAL

Control

Control	Serial control via RS-232 9pin female 7 language OSD menu (ENG/ITA/GER/ESP/FRA/JPN/KOR)	DIP Switch: Selecting between Input signals Selecting between 6 cropping positions for S-Video,Composite outputs
---------	--	---

General

Power supply	1 x External power supply 100~240V DC 12V,5A	1 x External power supply 100~240V DC 12V,2.5A
Power consumption (Max.)	9W	9W
Enclosure type	Metal	Metal
Enclosure dimensions	175W x 220D x 43H(mm)	200W x 137D x 30H(mm)
Package dimensions	302W x 310D x 62H(mm)	302W x 310D x 62H(mm)
Warranty	1 year	1 year
Certifications	CE, FCC	CE, FCC, UL, CB, KC
Enviroment	Operating temperature range: 0°C~50°C Storage temperature range: -20°C~70°C	Operating temperature range: 0°C~45°C Storage temperature range: -10°C~70°C

Mini Converters				
	HDMI-SDI Converter		4K Converter	Fiber Converter
Model	HSC	SHC	DPH	CVBXB series / CVBXW series
Key features	<ul style="list-style-type: none"> HDMI converting to SDI Up to 1080p Support 2 SDI output port 	<ul style="list-style-type: none"> SDI converting to HDMI Up to 1080p Pass through 1 SDI output port 	<ul style="list-style-type: none"> DisplayPort 1.2 to HDMI 2.0 4K Converter Up to 4096x2160@60Hz 	<ul style="list-style-type: none"> DVI: DVI converting to DVI Fiber VGA: VGA converting to DVI Fiber SVID: S-Video converting to DVI Fiber SDI: SDI converting to DVI Fiber Works cooperatively with DSL receiver Up to WUXGA/1080p@1,000m
Video Input				
Signal type/Connectors	1xHDMI via type A female	1xSDI via 75Ω BNC female	1X DisplayPort Female connector	<ul style="list-style-type: none"> DVI: 1xDVI-D via DVI-I female VGA: 1xRGB via D-sub 15pin female SVID: 1xS-Video via 75Ω BNC female 1xS-Video via 4pin DIN female SDI: 1xSDI via 75Ω BNC female
Video bandwidth (Pixel clock)	1.65Gbps	1.65Gbps	5.4Gbps	1.65Gbps
Resolution range	480i@60Hz,720p@50/59.94/60Hz, 1080i@50/59.94/60Hz, 1080p@23.98/24/25/29.97/ 30/50/59.94@60Hz	525i,625i,720p@50/59.94/60Hz, 1080i@50/59.94/60Hz, 1080p@23.98/24/25/29.97/ 30/50/59.94@60Hz	Up to 4096x2160@60Hz	Up to WUXGA(1920x1200)@60Hz
Video Output				
Signal type/Connectors	2xSDI via 75Ω BNC female	1xHDMI via type A female 1xSDI via 75Ω BNC female	1X HDMI Female connector	1xDVI-D via DVI-I female(CVBXB only) 1xSC connector
Video bandwidth (Pixel clock)	1.65Gbps	1.65Gbps	6Gbps	1.65Gbps
Resolution range	480i@60Hz,720p@50/59.94/60Hz, 1080i@50/59.94/60Hz, 1080p@23.98/24/25/29.97/ 30/50/59.94@60Hz	480i@60Hz,720p@50/59.94/60Hz, 1080i@50/59.94/60Hz, 1080p@23.98/24/25/29.97/ 30/50/59.94@60Hz	Up to 4096x2160@60Hz	Up to WUXGA(1920x1200)@60Hz
Control				
Control	N/A	N/A	N/A	N/A
General				
Power supply	1 x External power supply 100-240V DC 12V,1A	1 x External power supply 100-240V DC 12V,1A	1 x External power supply 100-240V DC 5V,2A	1 x External power supply 100-240V DC 12V,1.5A
Power consumption (Max.)	2.52W	2.4W	0.58W	DVI:1.9W/VGA:2.8W/S-Video:4.5W/SDI:2.6W
Enclosure type	Metal	Metal	Metal	Metal
Enclosure dimensions	100W x 85D x25H(mm)	100W x 85D x25H(mm)	53W x 16D x52.4H(mm)	CVBXB: 100W x 116D x 21H (mm) CVBXW: 115W x 70D x 90H (mm)
Package dimensions	242W x 185D x 70H(mm)	242W x 185D x 70H(mm)	160W x 140D x 67H(mm)	242W x 185D x 70H(mm)
Warranty	1 year	1 year	1 year	1 year
Certifications	CE, FCC	CE, FCC	CE, FCC	CE, FCC
Environment	Operating temperature range: 0°C-50°C Storage temperature range: -20°C-70°C	Operating temperature range: 0°C-50°C Storage temperature range: -20°C-70°C	Operating temperature range: 0°C-50°C Storage temperature range: -20°C-70°C	Operating temperature range: 0°C-50°C Storage temperature range: -20°C-70°C

Mini Converters

AD Converter	DA Converters			
DAD-U200	HDA	DDAP	DDAX	DDA



- RGB Analog converting to DVI Digital
- 4 different EDID setting
- Select switch between RGB input formats(RGB/YpPbPr)
- Pass through 1 D-sub output port



- HDMI Digital converting to RGB Analog and Audio
- Up to 1080p
- EDID setting DIP switch
- Compact size enclosure
- Stereo/Mono Audio output



- DVI Digital converting to RGB Analog
- Up to WUXGA, 1080p
- EDID setting DIP switch
- Compact size enclosure



- DVI Digital converting to RGB Analog
- Up to WUXGA, 1080p
- Pass through 1 DVI output port



- DVI Digital converting to RGB Analog
- Up to WUXGA, 1080p
- Pigtail conversion cable

Input/Output Connectors

1xRGB via D-sub 15pin female connector	1xHDMI via type A female connector	1xDVI-D via DVI-I female connector	1xDVI-D via DVI-I female connector	1xDVI-D via DVI-I female connector
--	------------------------------------	------------------------------------	------------------------------------	------------------------------------

1.65Gbps	1.65Gbps	1.65Gbps	1.65Gbps	1.65Gbps
RGB Mode: Max 1920x1200@60Hz YPbPr Mode : Max 1080p@60Hz	Up to 1080p(1920x1080)@60Hz	Up to WUXGA(1920x1200)@60Hz	Up to WUXGA(1920x1200)@60Hz	Up to WUXGA(1920x1200)@60Hz

Input/Output Connectors

1xDVI-D via DVI-I female connector 1xRGB via D-sub 15pin female connector (Pass through)	1xRGB via D-sub 15pin female connector 1xMini audio jack female connector	1xDVI-D via DVI-I female connector	1xRGB via D-sub 15pin female connector 1xDVI-D via DVI-I female connector (Pass through)	1xRGB via D-sub 15pin female connector
1.65Gbps	1.65Gbps	1.65Gbps	1.65Gbps	1.65Gbps
RGB Analog - RGBVGA-WUXGA,1080p - YPbPr: 480p@60Hz,576p@60Hz, 720p@60Hz,1080i@60Hz DVI - RGB: VGA-WUXGA,1080p - YPbPr: 480p@60Hz,576p@60Hz, 720p@60Hz,1080i@60Hz, 1080p@60Hz	Up to 1080p(1920x1080)@60Hz	Up to WUXGA(1920x1200)@60Hz	Up to WUXGA(1920x1200)@60Hz	Up to WUXGA(1920x1200)@60Hz

Button control: -Hsync&Vsync adjustment for input signal -Selecting between 4 different EDID (WUXGA,UXGA,SXGA,1080p)	N/A	N/A	N/A	N/A
--	-----	-----	-----	-----

1 x External power supply 100-240V DC 5V,2A	1 x External power supply 100-240V DC 5V,2A	1 x External power supply 100-240V DC 5V,2A	1 x External power supply 100-240V DC 5V,2A	No External power supply
3.5W	2.97W	1.98W	3.5W	1.8W
Metal	Metal	Metal	Metal	Metal
160W x 110D x25H(mm)	77W x 46D x21H(mm)	77W x 46D x21H(mm)	110W x 100D x 25H(mm)	39.5W x 15D x 75.2H(mm)
242W x 185D x 70H(mm)	160W x 140D x 65H(mm)	160W x 140D x 65H(mm)	242W x 185D x 70H(mm)	160W x 140D x 67H(mm)
1 year	1 year	1 year	1 year	1 year
CE, FCC	CE, FCC	CE, FCC	CE	CE, FCC
Operating temperature range: 0°C-50°C	Operating temperature range: 0°C-50°C	Operating temperature range: 0°C-50°C	Operating temperature range: 0°C-50°C	Operating temperature range: 0°C-50°C
Storage temperature range: -20°C-70°C	Storage temperature range: -20°C-70°C	Storage temperature range: -20°C-70°C	Storage temperature range: -20°C-70°C	Storage temperature range: -20°C-70°C

Contact us

Head Office (KOREA)

- #908/103, Digital Empire2, 88 Sinwon-ro, Yeongtong-gu, Suwon-si, Gyeonggi-do, 16681, Korea
- TEL : +82-31-695-5543
- FAX : +82-31-695-5545
- E-mail : jhchoi35@ophit.com

Factory (KOREA)

- (302, Sun technovil, Mangpo-Dong) 77, Deogyong-daero 1471beon-gil, Yeongtong-gu, Suwon-si, Gyeonggi-do, 16681, Korea
- TEL : +82-31-205-4191
- FAX : +82-31-205-4197

World Wide Sales Offices

USA Foreeseon USA

- 2210E. Winston Road Anaheim, CA 92806
- TEL : +1-714-300-0540
- FAX : +1-714-300-0546
- E-mail : Mr. Jay Jong / Sales Manager
jhong@fsnmed.com

Germany Foreeseon GmbH

- Industriestrasse 38a, 63150 Heusenstamm, Germany
- TEL : +49 (0) 6104 64398 10
- FAX : +49 (0) 6104 64398 11
- E-Mail : Mr. Jason Kwon / Branch Manager
Jason.kwon@fsnmed.eu

UK Foreeseon UK

- Unit 71 Barwell Business Park, Leatherhead road, Chessington Surrey, KT9 2NY United Kingdom
- TEL : +44-208-546-1047
- FAX : +44-208-546-3931
- E-Mail : Mr. Jason Kwon / Branch Manager
Jason.kwon@fsnmed.eu



www.ophit.com



OPHIT CO., LTD.

HEAD OFFICE #908/103, Digital Empire II, 88 Sinwon-ro, Yeongtong-gu, Suwon-city, Gyeonggi-do, 16681, Korea
Tel : +82.31.695.5542~4 Fax : +82.31.695.5545 E-mail : jhchoi35@ophit.com

FACTORY (3F, Suntechnovil, Mangpo-dong) 77, Deogyong-daero 1471beon-gil,
Yeongtong-gu, Suwon-city, Gyeonggi-do 16681, Korea
Tel : +82.31.205.4191 Fax : +82.31.205.4197