

# Accessories

## LOTS OF EXTRAS FOR EVERYDAY USE

An extensive range of accessories, alongside the system components, complements any individual demands you may have of an equipment carrier. Among other things we provide: special holders for the correct storage of endoscopes, gas bottles or infusions; baskets for storing small materials and different extension cables, plugs and sockets necessary for safe electrification. Thanks to our extensive range, nearly any requirements can be met by our standard models.



# PIVOT ARMS AND VARIABLE HEIGHT SUPPORT ARMS

In their comprehensive product portfolio, ITD GmbH offers a large selection of different support arms (fixed, pivoting and height adjustable) that can be attached to the individual type of equipment trolley, depending on the type and options of connection. Thereby, in order to accept all types of monitor without any problems, all versions are available with VESA 75 / 100 adaptations, universal adapter or Table Top Mount adapter.

A more comprehensive overview of the complete portfolio is provided in the product catalogue of our support arms.

---

**When the trolley is intended to be used in conjunction with supporting arms, the stability must also be measured according to EN60601-1. We will gladly advise you on the appropriate use of counterweights.**

---



# OVERVIEW OF THE VERSIONS

## Pivot arm rm-port

The pivot arms rm-port are characterised by extraordinarily rapid, user-friendly installation and increased ease of use for users. Large-capacity internal cable ducts that ensure smooth cable feeding and covers with a click & slide function are used for quick and secure locking cables in the cable channel. For above-average ease of use the support arms already have optimally adjusted torque in the joints. This ensures a continuously variable horizontal slide when positioning the arms. The rm-port pivot arms are available in two standard lengths and as double arms.



Pivot arm rm-port, single  
available length:  
250 mm and 325 mm



Pivot arm rm-port, double  
available length:  
250 mm + 250 mm and 325 mm + 325mm

## Variable height support arm flexion-port

The flexion-port variable height support arm is perfect for the accommodation of different monitors. Effortless lifting and positioning of the devices is achieved using pressurised gas springs. During the initial installation, flexion-port is set to the weight of the appliance. Thereafter, any further positioning can be carried out without the effort of adjustment. The available terminals provide the secure fixture of the joints during the transportation of mobile applications. flexion-port is available in three standard lengths (300, 400 and 600 mm) and is available in combination with an additional pivot arm (350 mm).



Variable height support arm  
flexion-port

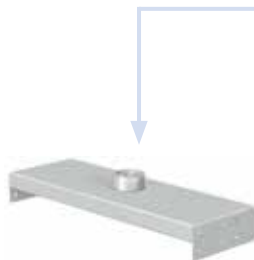


Variable height support arm flexion-port  
on pivot arm



Variable height support arm  
flexion-port special adaptation  
for pro-cart

Special adaptation of flexion-port for classic-cart and compact-cart



Crossbeam, single



Monitor shelf, double  
without pivot arm



Monitor shelf, double  
with pivot arm

# PIVOT ARMS rm-port

## Pivot arms rm-port with VESA 75 / 100 adaptation

The rm-port pivot arm (single or double) is equipped with a tilt and swivel unit with VESA 75 / 100 adaptation for particularly user-friendly positioning of the monitors. Interior cable ducts with strain relief allow accommodation of various cables. Depending on the version there is a large radius of action allowing for a broad operating range. The spring-loaded monitor holder has a tilt of  $\pm 20^\circ$ ,  $\pm 90^\circ$  swivel, and is rotatable by about  $\pm 5^\circ$ .

- Installation height: 3 U (96 mm)
- Load capacity: Pivot arm, single: up to 23 kg / 50.6 lbs; Monitor weight up to 18 kg / 39.6 lbs  
Pivot arm, double: up to 18 kg / 39.6 lbs; Monitor weight up to 18 kg / 39.6 lbs
- Material: steel / aluminium
- Finish: RAL 7035 light grey powder-coated
- Installation: in the T-slots of the vertical extrusions or on the supporting column
- Scope of delivery: 1 pivot arm including mounting hardware. For mounting on classic-cart, compact-cart please order the mounting kit separately.



Pivot arm rm-port, single



Pivot arm rm-port, double

Pivot arm, single	Product line	Item number L = 250 mm	Item number L = 325 mm
Monitor weight 0-14 kg / 0-30.8 lbs	all	TH.2170.991	TH.2171.991
Monitor weight 14-18 kg / 30.8-39.6 lbs	all	TH.2172.991	TH.2173.991
Mounting kit	classic-cart, compact-cart		ZV.9731.999

Pivot arm, double	Product line	Item number L=250 mm + 250 mm	Item number L=325 mm + 325 mm
Monitor weight 0-14 kg / 0-30.8 lbs	classic-cart, compact-cart	TH.2260.991	TH.2261.991
Monitor weight 14-18 kg / 30.8-39.6 lbs	classic-cart, compact-cart	TH.2262.991	TH.2263.991
Mounting kit	classic-cart, compact-cart		ZV.9731.999

# VARIABLE HEIGHT ARMS flexion-port

## Variable height support arms flexion-port with VESA 75 / 100 adaptation

The variable height support arm flexion-port provides spacious, snap-in cable ducts for the accommodation of several cables. Adjustable pivot joints with a brake function ensure precise positioning. The monitor mount has a tilt of  $\pm 20^\circ$ , a  $\pm 90^\circ$  swivel, and is rotatable by about  $\pm 5^\circ$ . Tilting the monitor can take place with little effort due to the spring-loaded support.

Installation height: 5 U (160 mm)  
 Material: steel / aluminium  
 Finish: RAL 7035 light grey powder-coated  
 Decorative trims: flexion-port: see <sup>1)</sup>  
 Installation: in the T-slots of the vertical extrusions or on the supporting column  
 Scope of delivery: 1 support arm including mounting hardware.

**For mounting on classic-cart, compact-cart please order the mounting kit separately.**



Variable height support arm flexion-port

Variable height support arm flexion-port on pivot arm

Variable height support arms with VESA 75 / 100 adaptation	Product line	Load capacity	Item number
Length 300 mm	all	3-10 kg / 6.6-22 lbs	HA.2200.XXX <sup>1)</sup>
	all	8-14 kg / 17.6-30.8 lbs	HA.2207.XXX <sup>1)</sup>
Length 400 mm	all	3-10 kg / 6.6-22 lbs	HA.2201.XXX <sup>1)</sup>
	all	8-14 kg / 17.6-30.8 lbs	HA.2208.XXX <sup>1)</sup>
Length 600 mm	classic-cart, compact-cart	3-10 kg / 6.6-22 lbs	HA.2202.XXX <sup>1)</sup>
	classic-cart, compact-cart	8-14 kg / 17.6-30.8 lbs	HA.2209.XXX <sup>1)</sup>
<b>Mounting kit</b>	classic-cart, compact-cart		<b>ZV.9731.999</b>

Variable height support arms on pivot arm with VESA 75 / 100 adaptation	Product line	Load capacity	Item number
Length 300 mm + 350 mm	classic-cart, compact-cart	3-10 kg / 6.6-22 lbs	HA.2218.XXX <sup>1)</sup>
	classic-cart, compact-cart	8-14 kg / 17.6-30.8 lbs	HA.2224.XXX <sup>1)</sup>
Length 400 mm + 350 mm	classic-cart, compact-cart	3-10 kg / 6.6-22 lbs	HA.2219.XXX <sup>1)</sup>
	classic-cart, compact-cart	8-14 kg / 17.6-30.8 lbs	HA.2225.XXX <sup>1)</sup>
<b>Mounting kit</b>	classic-cart, compact-cart		<b>ZV.9731.999</b>

<sup>1)</sup> Decorative trims: please replace .XXX with .901 = RAL 5021 water blue, .902 = RAL 5013 cobalt blue, .903 = RAL 7035 light grey, .908 = RAL 5015 sky blue, .909 = RAL 1003 signal yellow

# VARIABLE HEIGHT ARM flexion-port

## Variable height support arm flexion-port with VESA 75 / 100 adaptation for pro-cart

The variable height support arm flexion-port provides spacious, snap-in cable ducts for the accommodation of several cables. Adjustable pivot joints with a brake function ensure precise positioning. The monitor mount has a tilt of  $\pm 20^\circ$ , a  $\pm 90^\circ$  swivel, and is rotatable by about  $\pm 5^\circ$ . Tilting the monitor can take place with little effort due to the spring-loaded support. The support arm is mounted on the supporting column of the pro-cart.

Material:	steel / aluminium
Finish:	RAL 7035 light grey powder-coated
Decorative trims:	flexion-port: see <sup>1)</sup>
Installation:	on the supporting column
Scope of delivery:	1 support arm including mounting hardware



Variable height support arm with VESA 75 / 100 adaptation on support column pro-cart	Product line	Item number Length 300 mm	Item number Length 400 mm
Load capacity 3-10 kg / 6.6-22 lbs	pro-cart	HA.2238.XXX <sup>1)</sup>	HA.2239.XXX <sup>1)</sup>
Load capacity 8-14 kg / 17.6-30.8 lbs	pro-cart	HA.2240.XXX <sup>1)</sup>	HA.2241.XXX <sup>1)</sup>

## Variable height support arm flexion-port with VESA 75 / 100 adaptation for classic-cart and compact-cart

The variable height support arm flexion-port provides spacious, snap-in cable ducts for the accommodation of several cables. Adjustable pivot joints with a brake function ensure precise positioning. The monitor mount has a tilt of  $\pm 20^\circ$ , a  $\pm 90^\circ$  swivel, and is rotatable by about  $\pm 5^\circ$ . Tilting the monitor can take place with little effort due to the spring-loaded support. The support arm is mounted on the monitor crossbeam or the monitor shelf, which are separately available.

Material:	steel / aluminium
Finish:	RAL 7035 light grey powder-coated
Decorative trims:	flexion-port: see <sup>1)</sup>
Installation:	on the monitor crossbeam / on monitor shelf
Scope of delivery:	1 support arm including mounting hardware



Variable height support arm with VESA 75 / 100 adaptation on crossbeam / monitor shelf	Product line	Item number Length 300 mm	Item number Length 400 mm
Load capacity 3-10 kg / 6.6-22 lbs	classic-cart, compact-cart	HA.2230.XXX <sup>1)</sup>	HA.2231.XXX <sup>1)</sup>
Load capacity 8-14 kg / 17.6-30.8 lbs	classic-cart, compact-cart	HA.2232.XXX <sup>1)</sup>	HA.2233.XXX <sup>1)</sup>

# VARIABLE HEIGHT ARM flexion-port

## Variable height support arm on pivot arm with VESA 75 / 100 adaptation for classic-cart and compact-cart

The variable height support arm flexion-port provides spacious, snap-in cable ducts for the accommodation of several cables. Adjustable pivot joints with a brake function ensure precise positioning. The monitor mount has a tilt of  $\pm 20^\circ$ , a  $\pm 90^\circ$  swivel, and is rotatable by about  $\pm 5^\circ$ . Tilting the monitor can take place with little effort due to the spring-loaded support. The support arm is mounted on the monitor crossbeam or the monitor shelf, which are separately available.

Material:	steel / aluminium
Finish:	RAL 7035 light grey powder-coated
Decorative trims:	flexion-port: see <sup>1)</sup>
Installation:	on the monitor crossbeam / on monitor shelf
Scope of delivery:	1 support arm including mounting hardware



Variable height support arm with VESA 75 / 100 adaptation on crossbeam / monitor shelf	Product line	Item number Length 300 mm + 350 mm	Item number Length 400 mm + 350 mm
Load capacity 3-10 kg / 6.6-22 lbs	classic-cart, compact-cart	HA.2234.XXX <sup>1)</sup>	HA.2235.XXX <sup>1)</sup>
Load capacity 8-14 kg / 17.6-30.8 lbs	classic-cart, compact-cart	HA.2236.XXX <sup>1)</sup>	HA.2237.XXX <sup>1)</sup>



# MONITOR CROSSBEAM / SHELF flexion-port

## Monitor crossbeam, single for flexion-port

The monitor crossbeam is mounted between the two vertical extrusions of the „Profi“ classic-cart equipment cart (with power columns) or on the „Profi“ compact-cart. The flexion-port height-adjustable support arm can be placed directly on the monitor crossbeam.

Installation height: 2 U (64 mm)  
 Load capacity: up to 14 kg / 30.8 lbs  
 Material: steel  
 Finish: RAL 7035 light grey powder-coated  
 Installation: in the T-slots of vertical extrusions  
 Scope of delivery: 1 monitor crossbeam including mounting hardware

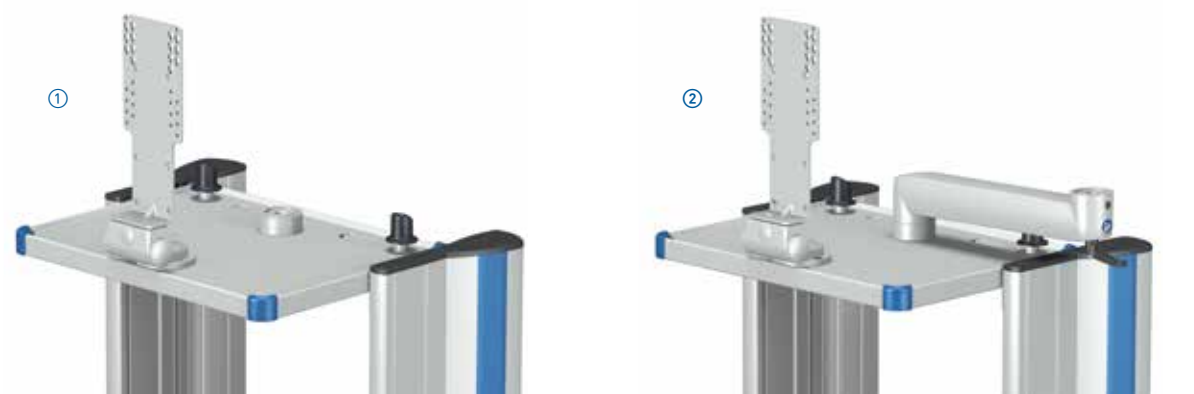


Monitor crossbeam, single	Item number W 450 mm	Item number W 500 mm	Item number W 600 mm	Item number W 650 mm
for classic-cart and compact-cart	HA.4511.991	HA.5011.991	HA.6011.991	HA.6511.991

## Monitor shelf, double for flexion-port

The monitor shelf is mounted between the two vertical extrusions of the „Profi“ classic-cart equipment cart (with power columns) or „Profi“ compact-cart. The monitor shelf is available in two versions: either with or without an installed pivot arm. Both versions are equipped with quick-release locking and come equipped with a universal monitor bracket with the VESA 75 / 100 adaptation (allowing  $\pm 15^\circ$  tilt,  $\pm 35^\circ$  swivel). The swivel range of the support arm is  $266^\circ$  and with the pivot arm variant it is  $180^\circ$ .

Installation height: 2 U (64 mm)  
 Load capacity: Shelf: max. 30 kg / 66 lbs distributed load; Monitor holder: max. 14 kg / 30.8 lbs  
 Material: steel  
 Finish: RAL 7035 light grey powder-coated  
 Decorative trims: corners see <sup>1)</sup>  
 Installation: in the T-slots of vertical extrusions  
 Scope of delivery: 1 monitor shelf including mounting hardware



Monitor shelf for flexion-port	Item number W 450 mm	Item number W 500 mm	Item number W 600 mm	Item number W 650 mm
① without pivot arm for classic-cart		GW.5099.XXX <sup>1)</sup>	GW.6099.XXX <sup>1)</sup>	
② without pivot arm for compact-cart	CC.4573.XXX <sup>1)</sup>	CC.5073.XXX <sup>1)</sup>		CC.6573.XXX <sup>1)</sup>
① with pivot arm for classic-cart		GW.5098.XXX <sup>1)</sup>	GW.6098.XXX <sup>1)</sup>	
② with pivot arm for compact-cart	CC.4572.XXX <sup>1)</sup>	CC.5072.XXX <sup>1)</sup>		CC.6572.XXX <sup>1)</sup>

<sup>1)</sup> Decorative trims: please replace .XXX with .901 = RAL 5021 water blue, .902 = RAL 5013 cobalt blue, .903 = RAL 7035 light grey, .908 = RAL 5015 sky blue, .909 = RAL 1003 signal yellow

# HANDLE / COUNTERWEIGHT SET flexion-port

## Handle for the tilt and swivel unit with the VESA 75 / 100 adaptation and spring loaded support

The handle is specially designed for the swivel and tilt unit with the VESA 75 / 100 adaptation and spring loaded support and can also be retrofitted at any time. It is designed for monitors of different sizes with height adjustability and allows a comfortable adjustment of the assembled bracket to the desired position.

Material:	steel
Finish:	RAL 7035 light grey powder-coated
Installation:	at the tilt and swivel unit with the VESA 75 / 100 adaptation
Scope of delivery:	1 handle including mounting hardware



Designation	Product line	Item number
Handle for tilt and swivel unit with the VESA 75 / 100 adapter	all	TS.0808.991

## Counterweight set

In order to comply with EN60601-1 regulations governing the stability of the mobile equipment carriers in conjunction with support arms, counterweights are required. The appropriate counterweights depend on the equipment cart and are located in the front stabilisers, mounted on or below the base crossbeam.

Material:	steel
Finish:	RAL 7035 light grey powder-coated
Scope of delivery:	1 counterweight set including mounting hardware. Factory assembly only

Counterweight set	Installation	Weight	Item number
for uni-cart	under the basic frame	15 kg / 33 lbs	RS.4391.991
	in the front stabilisers	2 x 4 kg / 2 x 8.8 lbs	RS.0344.999
for vexio-cart	under the front stabilisers	2 x 4 kg / 2 x 8.8 lbs	NT.4140.800
for pro-cart	between the front stabilisers	15 kg / 33 lbs	PT.2045.991
for classic-cart	on the base crossbeam	16 kg / 35.2 lbs	HA.2094.991
	under the base crossbeam	13 kg / 28.6 lbs	ZV.9742.999
for compact-cart	on the base crossbeam	16 kg / 35.2 lbs	HA.2093.991
	under the base crossbeam	15 kg / 33 lbs	ZV.9511.999

# STORAGE BASKETS / PLASTIC BOX

## Storage basket

For the storage of medical accessories.

① ② Storage basket conical. Dimensions: W 305 mm, D 205 mm, H 150 mm.

Load capacity: 3 kg / 6.6 lbs  
Material: steel  
Finish: RAL 9016 white, fluidised-bed coated  
Installation: on uni-cart in the front T-slots also with an adapter at the back of the support column - factory assembly only; on vexio-cart and pro-cart in the front and rear T-slots of the support column  
Scope of delivery: 1 storage basket including mounting hardware

③ Storage basket conical, small. Dimensions: W 205 mm, D 93 mm, H 150 mm.

Load capacity: 3 kg / 6.6 lbs  
Material: steel  
Finish: RAL 7035 light grey powder-coated  
Installation: on the uni-cart, vexio-cart, pro-cart in the front T-slots. Installation on the drawer is possible in the factory; on vexio-cart and pro-cart - also at the rear of the support column  
Scope of delivery: 1 storage basket including mounting hardware



Designation	Installation height	Product line	Item number
① Storage basket conical	5 U (160 mm)	all	<b>ZV.9967.800</b>
② Storage basket conical, rear side mounting	5 U (160 mm)	uni-cart	<b>ZV.9989.991</b>
③ Storage basket conical, small	5 U (160 mm)	all	<b>ZV.9892.991</b>

## Mounting kit for storage baskets

To attach the storage baskets: conical ZV.9967.800 and a small conical ZV.9989.991 to the vertical extrusions of the classic-cart equipment trolley with power columns and the „Profi“ compact-cart.

Designation	Product line	Item number
Mounting kit	classic-cart, compact-cart	<b>ZV.9422.999</b>

## Plastic box

For the storage of medical accessories.

Load capacity: 3 kg / 6.6 lbs  
Material: Plastic / steel  
Finish: White / RAL 7035 light grey powder-coated  
Installation: In the front and rear T-slots of the support column  
Scope of delivery: 1 plastic box with holder including mounting hardware



Designation	Product line	Item number
Plastic box	uni-cart, vexio-cart, pro-cart	<b>ZV.9286.991</b>

# COMPUTER HOLDERS

## Computer holder

The customisation provided by the bracket ensures stability and safe transport for computers with body width dimensions of between 50-225 mm.

Material: steel  
 Finish: RAL 7035 light grey powder-coated  
 Installation: with an adjustable bracket left or right on the inside of the extrusion of the classic-cart, compact-cart  
 Scope of delivery: 1 computer holder including mounting hardware, pre-assembled

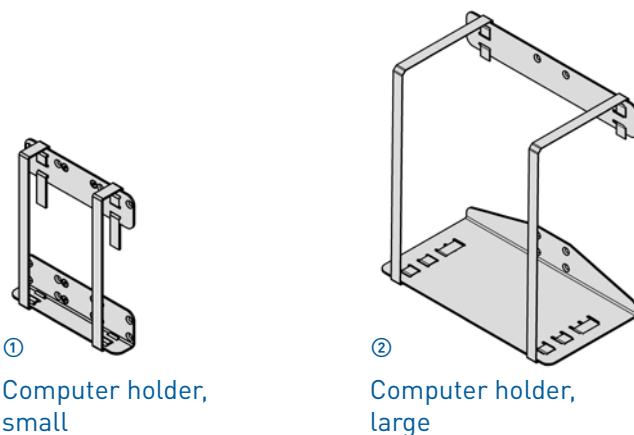


Designation	Product line	Item number
Computer holder	classic-cart, compact-cart	GW.0709.991

## Computer holder

These mounts are designed for computers of different sizes and two tension belts allow customisation and guarantee stability and safe transportation.

Material: steel  
 Finish: RAL 7035 light grey powder-coated  
 Installation: with an adjustable bracket to the left or right of the inside of the extrusion on classic-cart, compact-cart and on the outside of the extrusion of classic-cart without power columns or the „Economy“ compact-cart.  
 Scope of delivery: 1 computer holder including mounting hardware, pre-assembled



① Computer holder, small

② Computer holder, large



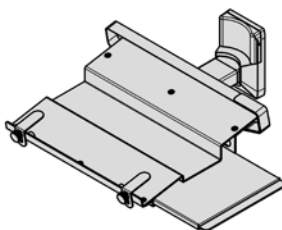
Designation	Load capacity	Product line	Item number
① Computer holder, small	5 kg / 11 lbs	all	TS.6144.991
② Computer holder, large	20 kg / 44 lbs	all <sup>1)</sup>	TS.6146.991

# LAPTOP HOLDER / POWER PACK HOLDER

## Laptop holder with mousepad for uni-cart, vexio-cart and pro-cart

The laptop holder is mounted directly on the supporting column and is suitable for all current models. These are held in place with a 935 mm long Velcro strip, and two height-adjustable mounts. The integrated mousepad can be extended both to the right and to the left to a distance of up to 230 mm.

Installation height:	4 U (128 mm)
Load capacity:	10 kg / 22 lbs distributed load
Material:	laptop holder: aluminium / steel; velcro strip: plastic
Finish:	RAL 7035 light grey powder-coated
Installation:	directly at the support column of uni-cart, vexio-cart or pro-cart
Scope of delivery:	1 laptop holder including mounting hardware, pre-assembled



Designation	Product line	Item number
Laptop holder with mousepad	uni-cart, vexio-cart, pro-cart	TS.6301.991

## Power pack holder, universal

The holder is designed for mounting power packs with a maximum range of up to 420 mm depending on the model. For the VESA 75 / 100 the universal monitor holder can be attached at the back as well as being mounted vertically on the support extrusion.

Installation height	small: 5 U (160 mm); large: 7 U (224 mm)
Load capacity:	small: up to 3 kg / 6.6 lbs; large: up to 5 kg / 11 lbs
Material:	steel
Finish:	RAL 7035 light grey powder-coated
Scope of delivery:	1 power pack holder including mounting hardware



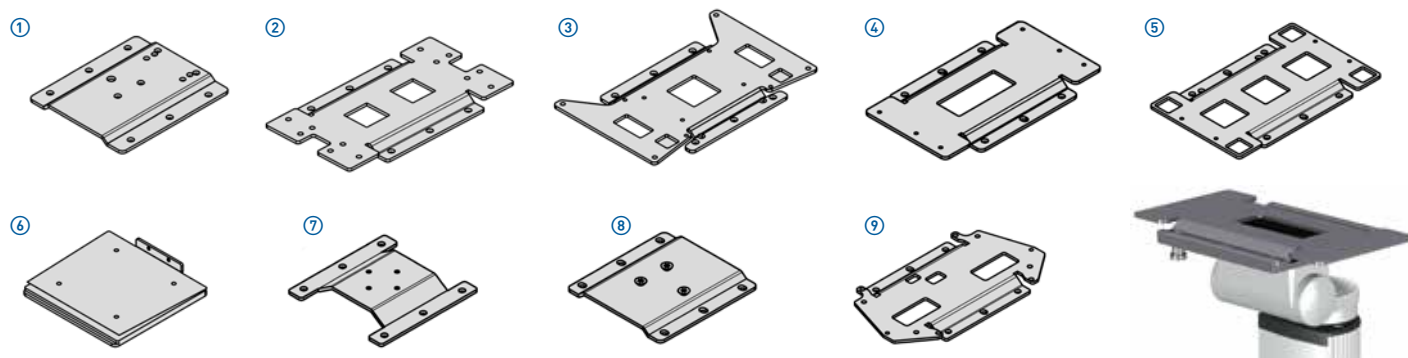
Designation	max. range	Product line	Item number
① Power pack holder, small	250 mm	all	TS.0524.991
② Power pack holder, large	420 mm	all	TS.0574.991

# ADAPTER PLATES

## Adapter plates for universal adapter

Adapter plates are required to attach the monitors with a universal adapter. The manufacturer-specific adapter plates are bolted to the respective monitor. Added security is provided by means of locking pins on the monitor bracket.

Material: aluminium  
Load capacity: up to 14 kg / 30.8 lbs  
Finish: anodised  
Scope of delivery: 1 adapter plate including mounting hardware



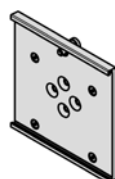
Adapter plates for universal adapter for	Product line	Item number
① GE Critikon Pro 100 / Dash / Datex Ohmeda	uni-cart, vexio-cart, pro-cart	<b>TS.0305.999</b>
② Mindray BeneView T5 / T8 / PM-9000	uni-cart, vexio-cart, pro-cart	<b>TS.0657.999</b>
③ Nihon Kohden Life Scope L / TR / PVM	uni-cart, vexio-cart, pro-cart	<b>TS.0576.999</b>
④ Nihon Kohden Life Scope VS / BSM	uni-cart, vexio-cart, pro-cart	<b>TS.0670.999</b>
⑤ Nihon Kohden SVM 7501 / 7503 / 7521 / 7523	uni-cart, vexio-cart, pro-cart	<b>TS.0892.999</b>
⑥ Schiller Argus LCM / LCX	uni-cart, vexio-cart, pro-cart	<b>TS.0360.999</b>
⑦ Philips Efficia CM 100/120/150	uni-cart, vexio-cart, pro-cart	<b>TS.0469.999</b>
⑧ Philips Slide In for IntelliVue MX 400-800	uni-cart, vexio-cart, pro-cart	<b>TS.0822.999</b>
⑨ Fukuda Denshi DS-7000 / 7100 / 7200 / 8100 / 8200	uni-cart, vexio-cart, pro-cart	<b>TS.0865.999</b>

**More adapter plates are available on request**

## Adapter plates for VESA 75 / 100

Adapter plates are required to attach the monitors with a VESA 75 / 100 adapter. The manufacturer-specific adapter plates are bolted to VESA 75 / 100. Added security is provided by means of locking pins on the monitor bracket.

Material: aluminium  
Load capacity: up to 14 kg / 30.8 lbs  
Finish: anodised  
Scope of delivery: 1 adapter plate including mounting hardware



Adapter plates for VESA 75 / 100 for	Product line	Item number
Spacelabs SL 2600	uni-cart, vexio-cart, pro-cart	<b>TS.0824.999</b>

**More adapter plates are available on request**

# ENDOSCOPE HOLDER

## Endoscope holder, single or dual

The endoscope holders are designed to hold an endoscope of all standard brands without introducing kink. Adjusting the height allows the holder to accommodate endoscopes up to 2 m long. The holder is height adjustable and provides attachment and protection.

- Material:
- support: plastic polypropylen; holder: plastic polypropylen reinforced;  
telescopic bar: steel chome-plated with one-hand operation
- Installation:
- in the support column; in the vertical extrusion; on two shelves or standard runners
- Scope of delivery:
- 1 endoscope holder including mounting hardware



Endoscope holder, single	Product line	Item number
in the vertical extrusion	classic-cart, compact-cart	GW.0867.999
in the support column	uni-cart	RS.0119.999
in the support column	pro-cart	PT.2047.999
on shelves	uni-cart, classic-cart, compact-cart	GW.0868.991
on shelves	pro-cart	PT.2046.991
on standard runners	uni-cart, pro-cart, classic-cart, compact-cart	GW.0868.991

Endoscope holder, dual	Product line	Item number
in the vertical extrusion	classic-cart, compact-cart	GW.0869.991
on shelves or on standard runners	uni-cart, classic-cart, compact-cart	GW.0870.991



# DRIP GLASS / CONNECTOR HOLDER / RINSING BOTTLE HOLDER

## Drip glass

The drip glass with a maximum content of 600 ml can be placed easily on the vertical extrusion or on the support column of the equipment cart. The height-adjustable drip glass can be attached to the telescopic arm of the endoscope holder.

Material:	drip glass: plastic Polypropylen, resistant to temperatures up to 135°C; holder: steel
Finish:	drip glass: transparent milky; holder: RAL 7035 light grey powder-coated
Installation:	in the outer T-slots of vertical extrusion or on the support column; using clamp directly on the telescopic bar of the endoscope holder
Scope of delivery:	1 drip glass including holder and mounting hardware



Designation	Product line	Item number
① Drip glass on the vertical extrusion or column	uni-cart, pro-cart, classic-cart, compact-cart	ZV.9963.991
② Drip glass on the telescopic bar	uni-cart, pro-cart, classic-cart, compact-cart	ZV.9986.991

## Connector holder

The connector holder securely accommodates up to three endoscope connectors.

Material:	plastic
Installation:	on the vertical extrusion
Scope of delivery:	1 connector holder including mounting hardware



Designation	Product line	Item number
Connector holder	uni-cart, pro-cart, classic-cart, compact-cart	ZV.9833.999

## Rinsing bottle holder

An appropriate holder can be mounted at the side of a shelf to accommodate a rinsing bottle.

Load capacity:	5 kg / 11 lbs
Material:	stainless steel
Installation:	on shelf
Scope of delivery:	1 rinsing bottle holder including mounting hardware, factory assembly only



Designation	Product line	Item number
Rinsing bottle holder	uni-cart, classic-cart, compact-cart	GW.9805.999
Rinsing bottle holder	vexio-cart, pro-cart	PT.2007.999

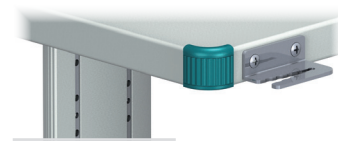


# HOSE HOLDER / CAMERA HOLDER / UNIVERSAL HOLDER

## Hose holder

The holder can accommodate hoses – e.g. from suction pumps – with a diameter of 6 mm to 14 mm.

Material: stainless steel  
Installation: on the shelf  
Scope of delivery: 1 hose holder including mounting hardware, factory assembly only

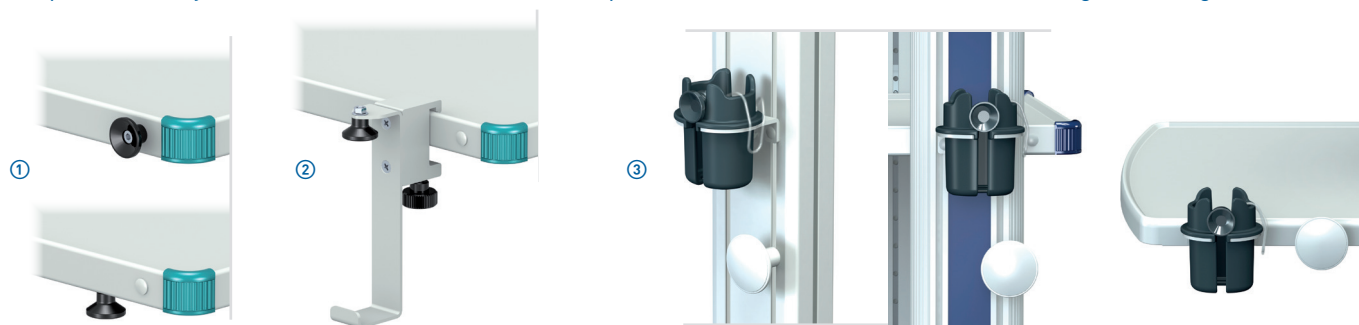


Designation	Product line	Item number
Hose holder	uni-cart, classic-cart, compact-cart	<b>GW.9882.999</b>

## Camera holder

The various camera holders are used to mount a camera head onto the eyepiece. ① can be mounted both to the side and the bottom of the storage shelf. ② can be moved laterally on the shelf. The camera head is mounted vertically and the bracket serves as a cable holder. ③ can be attached either to the support column, the vertical profile or the storage shelf. The cable winder can be used for excess lengths of cable.

Material: camera holders: plastic; ② clamp mounting: steel / aluminium; ③ console: steel  
Finish: camera holder: Anthracite grey; bracket or console: RAL 7035 light grey powder-coated  
Installation: ① ② to the storage shelf, ③ to the storage shelf at the factory only, to the vertical profile to the support column  
Scope of delivery: 1 camera holder; ② with clamp, ③ with console, cable winder including mounting material

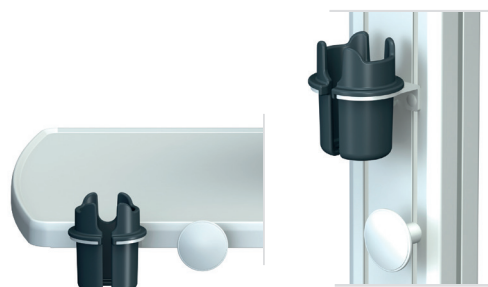


Designation	Product line	Item number
① Camera holder	uni-cart, classic-cart, compact-cart	<b>GW.9990.999</b>
② Camera holder with clamp	uni-cart, pro-cart, classic-cart, compact-cart	<b>GW.9983.991</b>
② Camera holder with cup	vexio-cart, pro-cart, classic-cart, compact-cart	<b>ZV.9199.800</b>

## Universal holder

The universal mount is used to mount the ultrasound probe and barcode scanner. It can be attached to the support column, the vertical profile and the storage shelf.

Material: universal holder: plastic; console: steel  
Finish: universal holder: anthracite grey; console: RAL 7035, light grey, powder-coated  
Installation: Onto the vertical profile or the column; onto the shelf at the factory  
Scope of delivery: 1 universal holder, console, cable winder including mounting material



Designation	Product line	Item number
Universal holder	vexio-cart, pro-cart, classic-cart, compact-cart	<b>ZV.9198.800</b>

# BARCODE SCANNER HOLDER / GEL BOTTLE HOLDER / BOTTLE HOLDER

## Barcode scanner holder

Barcode scanner holder for tapered scanning head with the head width of 6-8 cm.

Load capacity:	0.5 kg / 1.1 lbs
Material:	plastic / steel
Finish:	anthracite grey / RAL 7035 light grey powder-coated
Installation:	in the front and rear T-slots of the support column
Scope of delivery:	1 barcode scanner holder including mounting hardware



Designation	Product line	Item number
Barcode scanner holder	uni-cart, vexio-cart, pro-cart	ZV.9287.991

## Gel bottle holder

This holders are supplied for bottles up to Ø 60 mm.

Material:	steel
Finish:	RAL 7035 light grey powder-coated
Installation:	on a shelf or drawer; for vexio-cart also on the side of the support column
Scope of delivery:	1 gel bottle holder including mounting hardware, on a shelf or drawer - factory assembly only



Designation	Product line	Item number
Gel bottle holder	all	GW.0800.991

## Bottle holder

These brackets are used to hold bottles of various sizes. They are suitable for a 1-liter wash bottle (Ø 120 mm) or a 2-liter secretion glass (Ø 145 mm).

Load capacity:	5 kg / 11 lbs
Material:	steel
Finish:	RAL 7035 light grey powder-coated
Installation:	lateral to vertical extrusion
Scope of delivery:	1 bottle holder including mounting hardware



Designation	Product line	Item number
Bottle holder Ø 120 mm	all	GW.0400.991
Bottle holder Ø 145 mm	all	GW.0401.991

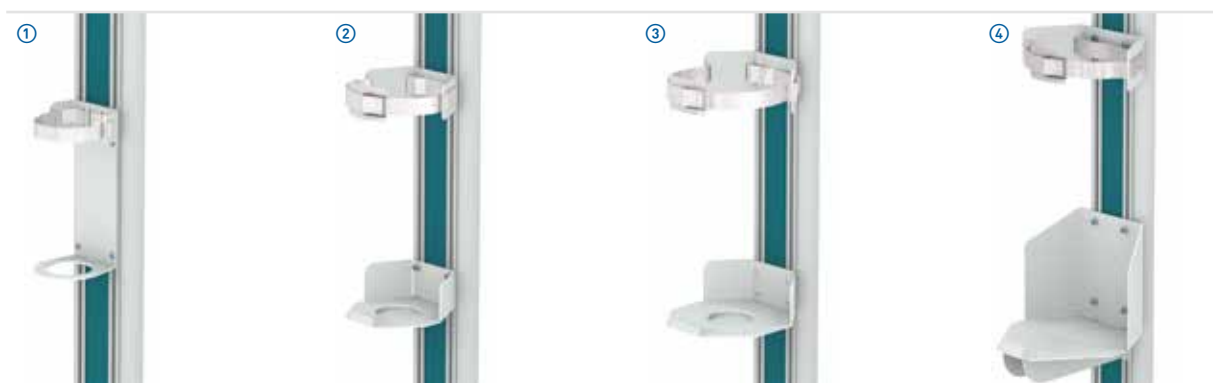
**When the trolley is intended to be used in conjunction with bottle holders, the stability must also be measured according to EN60601-1. We will gladly advise you on the appropriate use of counterweights.**

# GAS BOTTLE HOLDERS

## Gas bottle holder

The gas bottle holder can be mounted at any height or in a grid of 32 mm along the vertical extrusions or the support column.

Material: steel  
 Finish: RAL 7035 light grey powder-coated  
 Installation: at the front of support column of vexio-cart, uni-cart and pro-cart or at the rear of support column of vexio-cart and pro-cart or on the side of vertical extrusion of classic-cart and compact-cart  
 Scope of delivery: 1 gas bottle holder including mounting hardware, pre-assembled



Gas bottle holder	Content in liter	Load capacity	Product line	Item number
① max. Ø 100 mm	2 L	15 kg / 33 lbs	all	<b>GW.0466.991</b>
② max. Ø 145 mm	3 L / 5 L / 10 L	20 kg / 44 lbs	all	<b>GW.0160.991</b>
③ max. Ø 175 mm	10 L / 20 L	20 kg / 44 lbs	all	<b>GW.0890.991</b>
④ max. Ø 205 mm	20 L	50 kg / 110 lbs	all	<b>GW.0285.991</b>

## Gas bottle holder with adapter plate for installation at rear side of the support column of uni-cart

The gas bottle holder can be attached at any height at the rear side of the support column of the uni-cart.

Material: steel  
 Finish: RAL 7035 light grey powder-coated  
 Installation: on the rear side of the support column of uni-cart  
 Scope of delivery: 1 gas bottle including mounting hardware, factory assembly only.



Gas bottle holder	Content in liter	Load capacity	Product line	Item number
① max. Ø 100 mm	2 L	15 kg / 33 lbs	uni-cart	<b>RS.0110.991</b>
② max. Ø 145 mm	3 L / 5 L / 10 L	20 kg / 44 lbs	uni-cart	<b>RS.0111.991</b>

When the trolley is intended to be used in conjunction with gas bottle holders, the stability must also be measured according to EN60601-1. We will gladly advise you on the appropriate use of counterweights. We advise to install gas bottle holders for more than 5 l content at the lowest position of vertical extrusions or of support column.

# IV POLE / STANDARD RUNNER

## IV pole

The IV pole has a 4-arm safety bottle holder. The height-adjustable range is 870 mm.

Material: steel  
 Installation: in the support column or in the vertical extrusion  
 Scope of delivery: 1 IV pole including mounting hardware and corresponding cap  
 Exception: pro-cart - the cap contained in the basic frame can be removed



Designation	Load capacity	Product line	Item number
① IV pole with one-hand adjustment	4 x 2 kg / 4 x 4.4 lbs	uni-cart	<b>ZV.9881.999</b>
② IV pole with one-hand adjustment	4 x 2 kg / 4 x 4.4 lbs	vexio-cart	<b>NT.4135.999</b>
③ IV pole with one-hand adjustment	4 x 2 kg / 4 x 4.4 lbs	pro-cart	<b>PT.2006.999</b>
④ IV pole with one-hand adjustment	4 x 2 kg / 4 x 4.4 lbs	classic-cart, compact-cart	<b>ZV.9882.999</b>
⑤ IV pole	4 x 5 kg / 4 x 11 lbs	classic-cart, compact-cart	<b>ZV.9464.999</b>

## Standard runner

The standard runner can be mounted at the front of the support column or at the side of the vertical extrusion.

Installation height: 1 U (32 mm)  
 Dimensions: D 10 mm x H 25 mm  
 Load capacity: 10 kg / 22 lbs  
 Material: stainless steel  
 Scope of delivery: 1 standard runner with adapter including mounting hardware



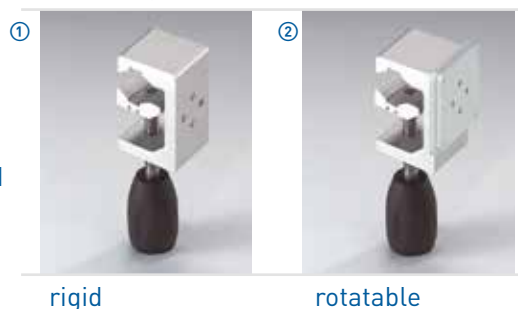
Designation	Length	Product line	Item number
① Standard runner	162 mm	uni-cart, vexio-cart, pro-cart	<b>RS.0132.991</b>
② Standard runner	390 mm	uni-cart, vexio-cart, pro-cart	<b>RS.0076.991</b>
③ Standard runner	390 mm	classic-cart, compact-cart	<b>GW.9801.991</b>
④ Standard runner for shelf	390 mm	vexio-cart, pro-cart	<b>PT.2152.991</b>

# ANCHORS / CLAMPS / RAIL FASTENER

## Anchor, rigid or rotatable

This anchor can be used to attach medical equipment to the side rails and to circular poles with a diameter of up to a maximum of Ø 38 mm. The rotatable bracket allows the equipment to be changed quickly between vertical and horizontal positions.

Load capacity: 5 kg / 11 lbs  
Material: anchor: aluminium; adapter plate: steel  
Finish: anchor: anodised;  
adapter plate: RAL 7035 light grey powder-coated  
Installation: on standard runner or pole  
Scope of delivery: 1 anchor



rigid

rotatable

Designation	Product line	Item number
① Anchor, rigid	all	<b>ZV.9820.799</b>
② Anchor, rotatable with adapter plate	all	<b>TS.6286.991</b>

## Clamps

Clamps are necessary for mounting accessories with pin diameters of Ø 16 mm or Ø 18.

Material: aluminium  
Finish: RAL 7035 light grey powder-coated  
Installation: on standard runner or on shelves  
Scope of delivery: 1 clamp



on standard runner

on shelf

Designation	Product line	Mounting pins Ø 16 mm	Mounting pins Ø 18 mm
① Clamp on standard runner	all	<b>ZV.9876.999</b>	<b>ZV.9877.999</b>
② Clamp on shelf	all	<b>ZV.9878.999</b>	<b>ZV.9879.999</b>

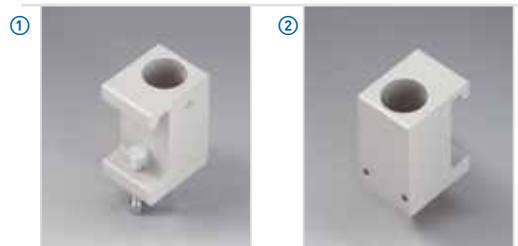
## Rail fastener

Rail fasteners are used for mounting accessories in various positions on shelves or on standard runners.

① is used in pairs for variable mounting of infusion stands or endoscope holders on two shelves.

② with tapped threads is used in combination with ①, when a drip glass has to be screwed on to one of the fasteners.

Material: aluminium  
Finish: RAL 7035 light grey powder-coated  
Installation: on standard runner or on shelf  
Scope of delivery: 1 rail fastener



Designation	Product line	Mounting Ø 25 mm
① Rail fastener	uni-cart, classic-cart, compact-cart	<b>ZV.9957.999</b>
② Rail fastener for drip glass	uni-cart, classic-cart, compact-cart	<b>ZV.9958.999</b>

# HOLDER FOR SUCTION SYSTEM / ADAPTER PIECES

## Holder for suction system

There are appropriate holders in different designs available for professional attachment of suction systems.

Material: steel  
Finish: RAL 7035 light grey powder-coated  
Scope of delivery: 1 holder including mounting hardware, with corresponding cap if necessary. For uni-cart with additional counterweight set for the basic frame



Designation	Installation height	Ergoline / Strässle Ø 25,5 mm	Hellige / KISS Ø 30 mm	custo med Ø 25 mm
① Holder for suction system for uni-cart	4 U (128 mm)	RS.0318.991		RS.0398.991
② Holder for suction system for vexio-cart		NT.4125.991	NT.4126.991	NT.4138.991
③ Holder for suction system for pro-cart		PT.2009.991	PT.2010.991	PT.2019.991
④ Holder for suction system classic-cart, compact-cart	3 U (96 mm)	GW.0570.991	GW.0702.991	GW.0579.991
⑤ Holder for suction system for classic-cart	2 U (64 mm)	GW.0717.991		

**When the trolley is intended to be used in conjunction with holders for suction systems, the stability must also be measured according to EN60601-1. We will gladly advise you on the appropriate use of counterweights.**

## Adapter pieces

The adapter pieces serve as a retainer for attachment parts and - depending on model and equipment trolley - have an internal journal diameter of 13 mm, 16 mm or 18 mm.

Material: for uni-cart: steel; for vexio-cart and pro-cart: aluminium / plastic ABS;  
for classic-cart and compact-cart: stainless steel  
Scope of delivery: 1 adapter piece including mounting hardware, matching cover cap except of pro-cart



Designation	Ø Outer	Ø Inner 16 mm	Ø Inner 18 mm
① Adapter piece for uni-cart	40 mm	ZV.9830.999	ZV.9831.999
② Adapter piece for vexio-cart	24 mm	NT.4136.991	NT.4137.991
③ Adapter piece for pro-cart	40 mm	PT.2024.991	PT.2025.991
④ Adapter piece for classic-cart, compact-cart	25 mm	ZV.9952.999	ZV.9953.999

# FOOT SWITCH CRADLE / JOINTED ARMS

## Foot switch cradle

The foot switch cradle is mounted on the vertical extrusion or on the support column of the equipment cart and provides the same accommodation of foot switch.

Material: steel  
Finish: RAL 7035 light grey powder-coated  
Scope of delivery: 1 foot switch cradle including mounting hardware



Designation	Product line	Item number
Foot switch cradle	all	ZV.9991.991

## Jointed arms

The jointed arms can be used for holding small devices and are available both with and without hose clamps. An appropriate adapter or clamp has to be ordered to match the mounting.

① Jointed arm with hose clamp. Hose clamp with knobs.

Working radius: max. 900 mm  
Load capacity: 1 kg / 2.2 lbs  
Material: aluminium  
Finish: matt chrome-plated, natural anodised  
Scope of delivery: 1 jointed arm including mounting hardware

② The jointed arm with two hinge joints using quick release buttons to rotate to up to approximately 230 °.

Working radius: max. 890 mm  
Load capacity: 1 kg / 2.2 lbs  
Material: stainless steel / plastic  
Finish: buffed  
Scope of delivery: 1 jointed arm including mounting hardware



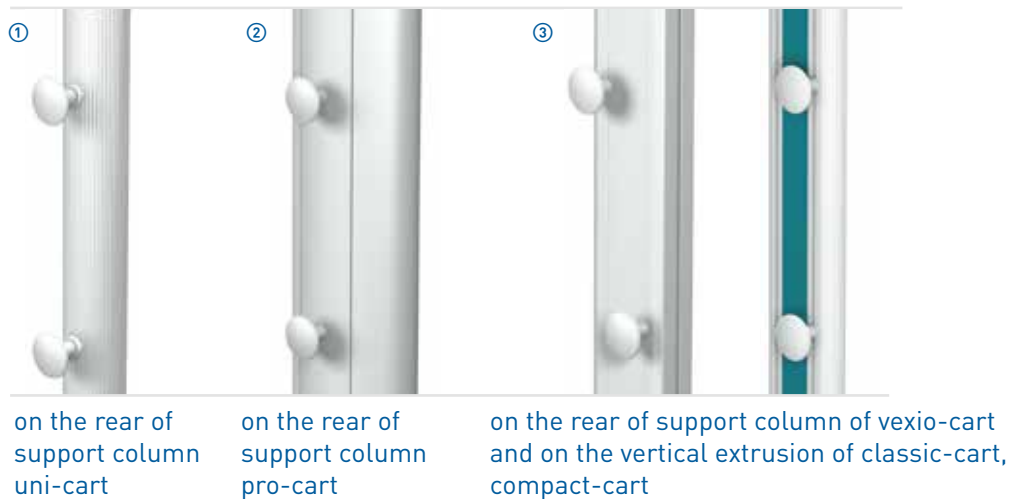
Designation	Product line	Item number
① Jointed arm with hose clamp, mounting pins Ø 16 mm	all	ZV.9955.799
② Jointed arm for small devices, mounting pins Ø 18 mm	all	ZV.9680.999

# CABLE WINDERS / CABLE HOLDER

## Cable winders

The cable winders can be mounted on a support column or vertical extrusion of the equipment cart and accommodates maximum 5 m cable. Factory assembly is on request possible.

Material:	plastic
Finish:	RAL 7035 light grey
Installation:	on the rear of the support column of uni-cart, vexio-cart and pro-cart; at the vertical extrusions of classic-cart, compact-cart
Scope of delivery:	2 cable winders including mounting hardware, factory assembly only for uni-cart 2 cable winders including cover strips and mounting hardware for pro-cart 2 cable winders including mounting hardware for vexio-cart, classic-cart, compact-cart



Cable winders	Installation height	Item number
① for uni-cart	10 U (320 mm)	RS.0267.991
② for pro-cart	19 U (608 mm)	PT.2004.991
③ for vexio-cart, classic-cart, compact-cart		FC.0253.991

## Cable holder

The cable holder is used for safe and careful handling of optical fibres or optical cables. The Ø 130 mm diameter drum prevents buckling.

Material:	steel / plastic
Finish:	white or RAL 7035 light grey powder-coated
Scope of delivery:	1 cable holder including mounting hardware



Designation	Product line	Item number
Cable holder	classic-cart, compact-cart	GW.9807.991



# CABLES

## Cables

A wide range of connection cables with or without POAG connection are supplied for EURO socket strips or IEC power transfer with cable harness.

EURO socket: IEC 320  
Length: 5 m  
Scope of delivery: 1 connection cable



Designation	Power plug	Rated current / rated voltage	Product line	Item number
① Connection cable Schuko	CEE7 / VII	10 A / 250 VAC	all	<b>ZV.9809.799</b>
② Connection cable Schuko with POAG	CEE7 / VII	10 A / 250 VAC	all	<b>ZV.9620.999</b>
③ Connection cable Swiss Standard	Type 12	10 A / 250 VAC	all	<b>ZV.9798.799</b>
④ Connection cable British Standard	Type BS 1363	10 A / 250 VAC	all	<b>ZV.9860.799</b>
⑤ Connection cable US Standard	3-pole US	15 A / 125 VAC	all	<b>ZV.9770.799</b>

The EURO power cable is used to connect the EURO socket strip with the EURO plug of the unit.

Connection: IEC EURO socket --> IEC EURO plug  
Scope of delivery: 1 EURO power cable



Designation	Product line	Item number
EURO power cable, length 0,6 m	all	<b>ZV.9773.799</b>
EURO power cable, length 1 m	all	<b>ZV.9960.799</b>
EURO power cable, length 1,5 m	all	<b>ZV.9371.799</b>
EURO power cable, length 2 m	all	<b>ZV.9372.799</b>
EURO power cable, length 2,5 m	all	<b>ZV.9373.799</b>

## Adapter cable

Adapter cable with plug and socket strip.

Connection: Schuko socket strip --> EURO plug  
Scope of delivery: 1 adapter cable



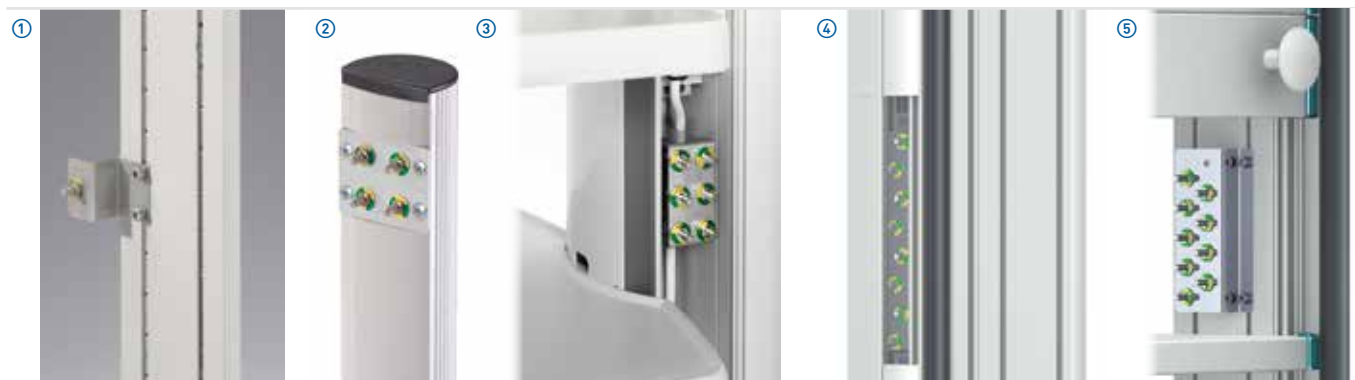
Designation	Product line	Item number
Adapter cable, length 0,3 m	all	<b>ZV.9959.799</b>

# EQUIPOTENTIAL BONDING POAG

## Equipotential plug (POAG) S6 DIN 42801

Professionals and patients are at risk when uncontrolled leakage current occur. There are caused by potential differences between electrical equipment and external conductive parts in rooms used in medical settings. Installing uninterrupted potential equalization is the safest solution.

Material: brass nickel-plated / steel  
 Scope of delivery: 1x (4x, 6x, 8x or 9x) equipotential plug S6 DIN 42801  
 1x (4x, 6x, 8x or 9x) colour marking disc yellow / green  
 1 x mounting bracket including mounting hardware



Designation	Installation height	Product line	Item number
① Equipotential plug		classic-cart, compact-cart	<b>ZV.9940.999</b>
② Plate with 4 equipotential plugs	2 U (64 mm)	uni-cart, vexio-cart	<b>RS.0125.991</b>
③ Plate with 6 equipotential plugs		pro-cart	<b>PT.0197.999</b>
④ Plate with 8 equipotential plugs		classic-cart, compact-cart	<b>CC.0276.999</b>
⑤ Plate with 9 equipotential plugs	5 U (160 mm)	classic-cart	<b>ZV.9802.999</b>

## Equipotential cable (POAG)

The equipotential cable is used to connect installed units with the equipotential plug POAG.

Material: Equipotential socket: brass nickel-plated  
 Cable: copper  
 Scope of delivery: 1 cable with inclined socket on both sides



Designation	Product line	Item number
Equipotential cable, length 0,3 m	all	<b>ZV.9941.999</b>
Equipotential cable, length 0,5 m	all	<b>ZV.9942.999</b>
Equipotential cable, length 1 m	all	<b>ZV.9943.999</b>
Equipotential cable, length 1,5 m	all	<b>ZV.9488.999</b>
Equipotential cable, length 5 m	all	<b>ZV.9944.999</b>

# SOCKET STRIP ATTACHMENT

## Socket strip attachment

The socket strip attachment is mounted on the rear vertical extrusion and is suitable for the classic-cart and „Economy“ compact-cart.

Material: steel  
Finish: RAL 7035 light grey powder-coated  
Installation: on the rear side of vertical extrusion  
Scope of delivery: 1 socket strip attachment including mounting hardware



Designation	Product line	Item number
Socket strip attachment	classic-cart, compact-cart	FC.0302.991

## Socket strip attachment with cable winder

The socket strip attachment can be mounted at the rear of the shelf or on the shelf itself. Surplus cable of up to 5 m in length can be held on the cable reel to save space. It is suitable for the following socket strips: EURO socket strip (6-way), Schuko earthed (3-way with switch), Swiss Standard (3-way with switch).

Material: steel / plastic  
Finish: RAL 7035 light grey powder-coated  
Scope of delivery: 1 socket strip attachment including mounting hardware



Socket strip attachment with cable winder	Product line	Item number
for width 450 mm	classic-cart, compact-cart	GW.0681.991
for width 500 mm, 600 mm, 650 mm	classic-cart, compact-cart	GW.0631.991

# PLUG REMOVAL BARRIER

## Plug removal barrier

The plug removal barrier prevents the plugs from being inadvertently pulled out of the socket strip and avoids unauthorised equipment from being plugged in.

- Material: steel
- Finish: RAL 7035 light grey powder-coated
- Scope of delivery: 1 plug removal barrier including mounting hardware



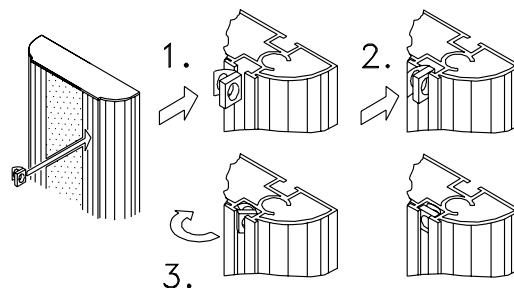
Designation	Installation height	Installation	Product line	Item number
① Plug removal barrier for socket strip Schuko, 3-way with switch	10 U (320 mm)	support column	uni-cart vexio-cart	<b>GW.0632.991</b>
② Plug removal barrier for socket strip Schuko, 3- / 6- / 8-way with switch		vertical extrusion	classic-cart	<b>GW.0633.991</b>

# MOUNTING MATERIAL / EQUIPMENT FIXING CORNERS

## Spring nut M6

The spring nuts are clipped into the T-slots at any point and are used for mounting system elements and accessories.

Material: steel / nirosta 4310  
Finish: zinc-plated  
Scope of delivery: 50 pieces



Designation	Product line	Item number
Spring nut M6	all	ZV.9851.999

## Equipment fixing corners

Secures the equipment placed on the platform to prevent sliding. For mounting on the shelf, base shelf, block of drawers or base. The particular flat fixing corners (3 mm) even fit under equipment very flat feet, e.g. printers. They are self-adhesive, but can also be screwed in place.

Finish: RAL 7035 light grey powder-coated  
Scope of delivery: 4 equipment fixing corners including mounting hardware



Designation	Product line	Item number
Equipment fixing corners	all	FC.0221.991